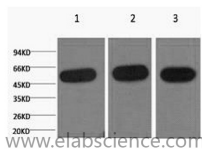


beta Tubulin Monoclonal Antibody

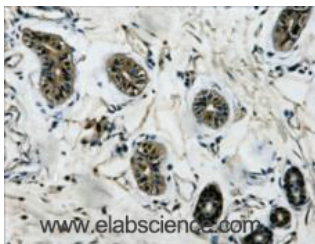
Catalog No.	E-AB-20095	Reactivity	H,M,R,Mk,Ch,Dg,Hm,Rb
Storage	Store at -20°C. Avoid freeze / thaw cycles.	Host	Mouse
Applications	WB,IHC-p,IP	Isotype	IgG

Note: Centrifuge before opening to ensure complete recovery of vial contents.

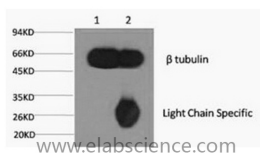
Images



Western Blot analysis of 1) HeLa, 2) Mouse kidney, 3) Rat heart using beta Tubulin Monoclonal Antibody at dilution of 1:5000.



Immunohistochemistry of paraffin-embedded Human colon tissue using beta Tubulin Monoclonal Antibody at dilution of 1:200.



1) Input: Mouse brain tissue, 2) IP product: IP at dilution of 1: 200

Immunogen Information

Immunogen	Synthetic Peptide
Swissprot	Q13509
Synonyms	TUBB3,TUBB4,Tubulin beta-3 chain,Tubulin beta-4 chain,Tubulin beta-III

Product Information

Calculated MW	50kDa
Observed MW	55kDa
Buffer	PBS with 0.02% sodium azide and 50% glycerol pH 7.4.
Purify	Protein A purification
Clone No.	Clone:5L3
Dilution	WB 1:500-10000, IHC 1:200, IP 1:200

Background

TUBB3, the class III β tubulin or Tuj1, is selectively expressed in testis and neurons of the central and peripheral nervous system. It has been widely used as a marker for neurons. Aberrant expression of TUBB3 has also been found in various tumors of non-neural origin and can be used as a biomarker for cancer aggressiveness and a marker for the tendency to respond poorly to chemotherapy. This antibody is specific to TUBB3 but not cross-react with other tubulin isoforms.

For Research Use Only

Thank you for your recent purchase.
 If you would like to learn more about antibodies, please visit www.elabscience.com.

Focus on your research Service for life science

Applications:WB-Western Blot IHC-Immunohistochemistry IF-Immunofluorescence IP-Immunoprecipitation FC-Flow cytometry ChIP-Chromatin Immunoprecipitation Reactivity: H-Human R-Rat M-Mouse Mk-Monkey Dg-Dog Ch-Chicken Hm-Hamster Rb-Rabbit Sh-Sheep Pg-Pig Z-Zebrafish X-Xenopus C-Cow.