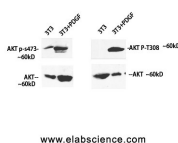


Phospho-Pan-Akt (Ser473) Polyclonal Antibody

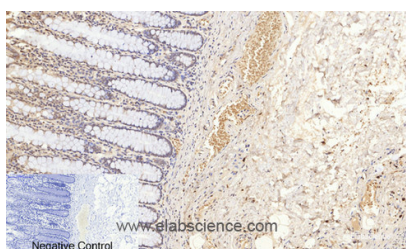
Catalog No.	E-AB-20802	Reactivity	H,M,R
Storage	Store at -20°C. Avoid freeze / thaw cycles.	Host	Rabbit
Applications	WB,IHC-p,IF,ELISA	Isotype	IgG

Note: Centrifuge before opening to ensure complete recovery of vial contents.

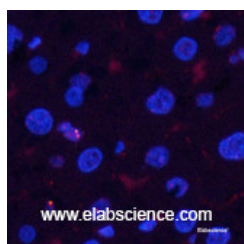
Images



Western Blot analysis of 3T3 cells treated using Phospho-Pan-Akt (Ser473) Polyclonal Antibody at dilution of 1:1000



Immunohistochemistry of paraffin-embedded Human colon tissue using Phospho-Pan-Akt (Ser473) Polyclonal Antibody at dilution of 1:200



Immunofluorescence analysis of Rat liver tissue using Phospho-Pan-Akt (Ser473) Polyclonal Antibody at dilution of 1:200

Immunogen Information

Immunogen	Synthesized peptide derived from human Akt around the phosphorylation site of Ser473
Swissprot	P31749,P31751,Q9Y243
Synonyms	AKT1,PKB,RAC,RAC-alpha serine/threonine-protein kinase,Protein kinase B,PKB,Protein kinase B alpha,PKB alpha,Proto-oncogene c-Akt,RAC-PK-alpha,AKT2,RAC-beta serine/threonine-protein kinase,Protein kinase Akt-2,Protein kinase B

Product Information

Calculated MW	56kDa
Observed MW	55kDa
Buffer	PBS with 0.02% sodium azide, 0.5% protective protein and 50% glycerol, pH7.4
Purify	Affinity purification
Dilution	WB 1:500-1:2000, IHC 1:100-1:300, IF 1:50-1:200, ELISA 1:40000

Background

Plays a role as a key modulator of the AKT-mTOR signaling pathway controlling the tempo of the process of newborn neurons integration during adult neurogenesis, including correct neuron positioning, dendritic development and synapse formation (By similarity). General protein kinase capable of phosphorylating several known proteins. Phosphorylates TBC1D4. Signals downstream of phosphatidylinositol 3-kinase (PI(3)K) to mediate the effects of various growth factors such as platelet-derived growth factor (PDGF), epidermal growth factor (EGF), insulin and insulin-like growth factor I (IGF-I). Plays a role in glucose transport by mediating insulin-induced translocation of the GLUT4 glucose transporter to the cell surface. Mediates the antiapoptotic effects of IGF-I. Mediates insulin-stimulated protein synthesis by phosphorylating TSC2 at 'Ser-939' and 'Thr-1462', thereby activating mTORC1 signaling and leading to both phosphorylation of 4E-BP1 and in activation of RPS6KB1. Promotes glycogen synthesis by mediating the insulin-induced activation of glycogen synthase. The activated form can suppress FoxO gene transcription and promote cell cycle progression. Essential for the SPATA13-mediated regulation of cell migration and adhesion assembly and disassembly.

For Research Use Only

Thank you for your recent purchase.
 If you would like to learn more about antibodies, please visit www.elabscience.com.

Focus on your research
Service for life science

Applications:WB-Western Blot IHC-Immunohistochemistry IF-Immunofluorescence IP-Immunoprecipitation FC-Flow cytometry ChIP-Chromatin Immunoprecipitation Reactivity: H-Human R-Rat M-Mouse Mk-Monkey Dg-Dog Ch-Chicken Hm-Hamster Rb-Rabbit Sh-Sheep Pg-Pig Z-Zebrafish X-Xenopus C-Cow.