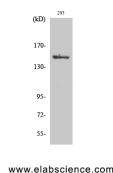


Phospho-MAP3K5 (Ser966) Polyclonal Antibody

Catalog No.	E-AB-20813	Reactivity	H,M,R
Storage	Store at -20°C. Avoid freeze / thaw cycles.	Host	Rabbit
Applications	WB,IHC-p,ELISA	Isotype	IgG

Note: Centrifuge before opening to ensure complete recovery of vial contents.

Images



Western Blot analysis of 293 cells with Phospho-MAP3K5 (Ser966) Polyclonal Antibody

Immunogen Information

Immunogen	Synthesized peptide derived from human ASK 1 around the phosphorylation site of Ser966
Swissprot	Q99683
Synonyms	MAP3K5,ASK1,MAPKKK5,MEKK5,Mitogen-activated protein kinase kinase kinase 5,Apoptosis signal-regulating kinase 1,ASK-1,MAPK/ERK kinase kinase 5,MEK kinase 5,MEKK 5

Product Information

Calculated MW	155kDa
Observed MW	155kDa
Buffer	PBS with 0.02% sodium azide, 0.5% protective protein and 50% glycerol, pH7.4
Purify	Affinity purification
Dilution	WB 1:500-1:2000, IHC 1:100-1:300, ELISA 1:20000

Background

Component of a protein kinase signal transduction cascade. Phosphorylates and activates MAP2K4 and MAP2K6, which in turn activate the JNK and p38 MAP kinases, respectively. Overexpression induces apoptotic cell death.

For Research Use Only

Thank you for your recent purchase.
 If you would like to learn more about antibodies, please visit www.elabscience.com.

**Focus on your research
 Service for life science**

Applications:WB-Western Blot IHC-Immunohistochemistry IF-Immunofluorescence IP-Immunoprecipitation FC-Flow cytometry ChIP-Chromatin Immunoprecipitation Reactivity: H-Human R-Rat M-Mouse Mk-Monkey Dg-Dog Ch-Chicken Hm-Hamster Rb-Rabbit Sh-Sheep Pg-Pig Z-Zebrafish X-Xenopus C-Cow.