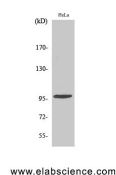


Phospho-CHEK2 (Thr68) Polyclonal Antibody

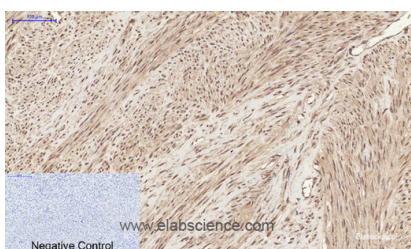
Catalog No.	E-AB-20843	Reactivity	H,M,R
Storage	Store at -20°C. Avoid freeze / thaw cycles.	Host	Rabbit
Applications	WB,IHC-p,IF,ELISA	Isotype	IgG

Note: Centrifuge before opening to ensure complete recovery of vial contents.

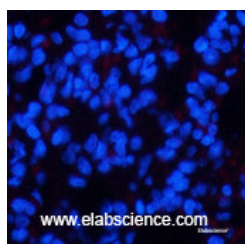
Images



Western Blot analysis of HeLa cells using Phospho-CHEK2 (Thr68) Polyclonal Antibody at dilution of 1:500



Immunohistochemistry of paraffin-embedded Human uterus tissue using Phospho-CHEK2 (Thr68) Polyclonal Antibody at dilution of 1:200



Immunofluorescence analysis of Rat lung tissue using Phospho-CHEK2 (Thr68) Polyclonal Antibody at dilution of 1:200

Immunogen Information

Immunogen	Synthesized peptide derived from human Chk2 around the phosphorylation site of Thr68
Swissprot	O96017
Synonyms	CHEK2,CDS1,CHK2,RAD53,Serine/threonine-protein kinase Chk2,CHK2 checkpoint homolog,Cds1 homolog,Hucds1,hCds1,Checkpoint kinase 2

Product Information

Calculated MW	61kDa
Observed MW	61kDa
Buffer	PBS with 0.02% sodium azide, 0.5% protective protein and 50% glycerol, pH7.4
Purify	Affinity purification
Dilution	WB 1:500-1:2000, IHC 1:100-1:300, IF 1:50-1:200, ELISA 1:10000-1:20000

Background

Regulates cell cycle checkpoints and apoptosis in response to DNA damage, particularly to DNA double-strand breaks. Inhibits CDC25C phosphatase by phosphorylation on 'Ser-216', preventing the entry into mitosis. May also play a role in meiosis. Regulates the TP53 tumor suppressor through phosphorylation at 'Thr-18' and 'Ser-20'.

For Research Use Only

Thank you for your recent purchase.
 If you would like to learn more about antibodies, please visit www.elabscience.com.

**Focus on your research
 Service for life science**

Applications:WB-Western Blot IHC-Immunohistochemistry IF-Immunofluorescence IP-Immunoprecipitation FC-Flow cytometry ChIP-Chromatin Immunoprecipitation Reactivity: H-Human R-Rat M-Mouse Mk-Monkey Dg-Dog Ch-Chicken Hm-Hamster Rb-Rabbit Sh-Sheep Pg-Pig Z-Zebrafish X-Xenopus C-Cow.