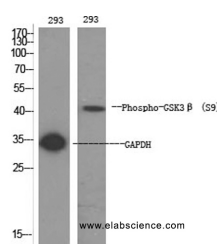


Phospho-GSK3 beta (Ser9) Polyclonal Antibody

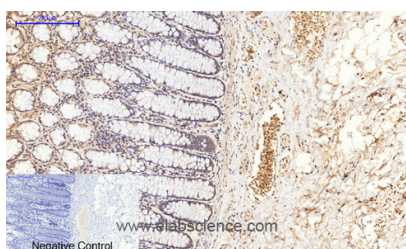
Catalog No.	E-AB-20886	Reactivity	H,M,R
Storage	Store at -20°C. Avoid freeze / thaw cycles.	Host	Rabbit
Applications	WB,IHC-p,IF,ELISA	Isotype	IgG

Note: Centrifuge before opening to ensure complete recovery of vial contents.

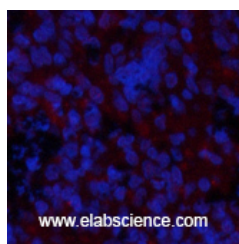
Images



Western Blot analysis of 293 cells using Phospho-GSK3 beta (Ser9) Polyclonal Antibody at dilution of 1:1000



Immunohistochemistry of paraffin-embedded Human colon tissue using Phospho-GSK3 beta (Ser9) Polyclonal Antibody at dilution of 1:200



Immunofluorescence analysis of Rat spleen tissue using Phospho-GSK3 beta (Ser9) Polyclonal Antibody at dilution of 1:200

Immunogen Information

Immunogen	Synthesized peptide derived from human GSK3β around the phosphorylation site of Ser9
Swissprot	P49841
Synonyms	GSK3B,Glycogen synthase kinase-3 beta,GSK-3 beta,Serine/threonine-protein kinase GSK3B

Product Information

Calculated MW	47kDa
Observed MW	48kDa
Buffer	PBS with 0.02% sodium azide, 0.5% protective protein and 50% glycerol, pH7.4
Purify	Affinity purification
Dilution	WB 1:500-1:2000, IHC 1:100-1:300, IF 1:100-1:300, ELISA 1:5000-1:20000

Background

Participates in the Wnt signaling pathway. Implicated in the hormonal control of several regulatory proteins including glycogen synthase, MYB and the transcription factor JUN. Phosphorylates JUN at sites proximal to its DNA-binding domain, thereby reducing its affinity for DNA. Phosphorylates MUC1 in breast cancer cells, and decreases the interaction of MUC1 with CTNNB1/beta-catenin. Phosphorylates CTNNB1/beta-catenin. Phosphorylates SNAI1. Plays an important role in ERBB2-dependent stabilization of microtubules at the cell cortex. Prevents the phosphorylation of APC and CLASP2, allowing its association with the cell membrane. In turn, membrane-bound APC allows the localization of MACF1 to the cell membrane, which is required for microtubule capture and stabilization. Phosphorylates MACF1 and this phosphorylation inhibits the binding of MACF1 to microtubules which is critical for its role in bulge stem cell migration and skin wound repair.

For Research Use Only

Thank you for your recent purchase.
 If you would like to learn more about antibodies, please visit www.elabscience.com.

Focus on your research
Service for life science

Applications:WB-Western Blot IHC-Immunohistochemistry IF-Immunofluorescence IP-Immunoprecipitation FC-Flow cytometry ChIP-Chromatin Immunoprecipitation Reactivity: H-Human R-Rat M-Mouse Mk-Monkey Dg-Dog Ch-Chicken Hm-Hamster Rb-Rabbit Sh-Sheep Pg-Pig Z-Zebrafish X-Xenopus C-Cow.