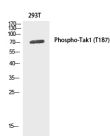


## Phospho-MAP3K7 (Thr187) Polyclonal Antibody

<b>Catalog No.</b>	E-AB-21065	<b>Reactivity</b>	H,M,R
<b>Storage</b>	Store at -20°C. Avoid freeze / thaw cycles.	<b>Host</b>	Rabbit
<b>Applications</b>	WB,IHC-p,ELISA	<b>Isotype</b>	IgG

**Note:** Centrifuge before opening to ensure complete recovery of vial contents.

### Images



www.elabscience.com

Western Blot analysis of 293T cells using Phospho-MAP3K7 (Thr187) Polyclonal Antibody at dilution of 1:1000

### Immunogen Information

<b>Immunogen</b>	Synthesized peptide derived from human Tak1 around the phosphorylation site of Thr187
<b>Swissprot</b>	O43318
<b>Synonyms</b>	MAP3K7,TAK1,Mitogen-activated protein kinase kinase kinase 7,Transforming growth factor-beta-activated kinase 1,TGF-beta-activated kinase 1

### Product Information

<b>Calculated MW</b>	67kDa
<b>Observed MW</b>	60kDa
<b>Buffer</b>	PBS with 0.02% sodium azide, 0.5% BSA and 50% glycerol, pH7.4
<b>Purify</b>	Affinity purification
<b>Dilution</b>	WB 1:500-1:2000, IHC 1:100-1:300, ELISA 1:10000

### Background

Component of a protein kinase signal transduction cascade. Mediator of TRAF6 and TGF-beta signal transduction. Activates IKK $\beta$  and MAPK8 in response to TRAF6 signaling. Stimulates NF-kappa-B activation and the p38 MAPK pathway. In osmotic stress signaling, plays a major role in the activation of MAPK8/JNK, but not that of NF-kappa-B.

#### For Research Use Only

Thank you for your recent purchase.

If you would like to learn more about antibodies, please visit [www.elabscience.com](http://www.elabscience.com).

**Focus on your research  
 Service for life science**

Applications:WB-Western Blot IHC-Immunohistochemistry IF-Immunofluorescence IP-Immunoprecipitation FC-Flow cytometry ChIP-Chromatin Immunoprecipitation Reactivity: H-Human R-Rat M-Mouse Mk-Monkey Dg-Dog Ch-Chicken Hm-Hamster Rb-Rabbit Sh-Sheep Pg-Pig Z-Zebrafish X-Xenopus C-Cow.