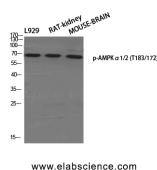


Phospho-AMPK alpha1/2 (Thr183/172) Polyclonal Antibody

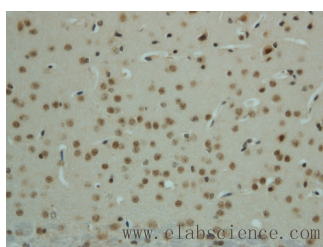
Catalog No.	E-AB-21121	Reactivity	H,M,R,Mk
Storage	Store at -20°C. Avoid freeze / thaw cycles.	Host	Rabbit
Applications	WB,IHC-p,IF,ELISA	Isotype	IgG

Note: Centrifuge before opening to ensure complete recovery of vial contents.

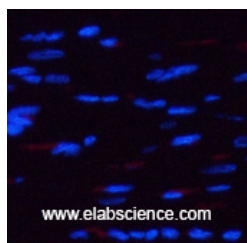
Images



Western Blot analysis of various cells using Phospho-AMPK alpha1/2 (Thr183/172) Polyclonal Antibody at dilution of 1:500



Immunohistochemistry of paraffin-embedded mouse brain using Phospho-AMPK alpha1/2 (Thr183/172) Polyclonal Antibody at dilution of 1:50



Immunofluorescence analysis of Rat heart tissue using Phospho-AMPK alpha1/2 (Thr183/172) Polyclonal Antibody at dilution of 1:200

Immunogen Information

Immunogen	Synthesized peptide derived from human AMPK α 1/2 around the phosphorylation site of Thr183/172
Swissprot	Q13131,P54646
Synonyms	PRKAA1,AMPK1,5'-AMP-activated protein kinase catalytic subunit alpha-1,AMPK subunit alpha-1,Acetyl-CoA carboxylase kinase,ACACA kinase,Hydroxymethylglutaryl-CoA reductase kinase,HMGCR kinase,Tau-protein kinase PRKAA1,PRKAA2,AMPK,

Product Information

Calculated MW	62kDa
Observed MW	63kDa
Buffer	PBS with 0.02% sodium azide, 0.5% protective protein and 50% glycerol, pH7.4
Purify	Affinity purification
Dilution	WB 1:500-1:2000, IHC 1:100-1:300, IF 1:50-1:200, ELISA 1:40000

Background

AMPK (for 5'-AMP-activated protein kinase) is a heterotrimeric complex comprising a catalytic α subunit and regulatory β and γ subunits. It protects cells from stresses that cause ATP depletion by switching off ATP-consuming biosynthetic pathways. AMPK is activated by high AMP and low ATP through a mechanism involving allosteric regulation, promotion of phosphorylation by an upstream protein kinase known as AMPK kinase, and inhibition of dephosphorylation. Activated AMPK can phosphorylate and regulate in vivo hydroxymethylglutaryl-CoA reductase and acetyl-CoA carboxylase, which are key regulatory enzymes of sterol synthesis and fatty acid synthesis, respectively.

For Research Use Only

Thank you for your recent purchase.
 If you would like to learn more about antibodies, please visit www.elabscience.com.

Focus on your research
Service for life science

Applications:WB-Western Blot IHC-Immunohistochemistry IF-Immunofluorescence IP-Immunoprecipitation FC-Flow cytometry ChIP-Chromatin Immunoprecipitation Reactivity: H-Human R-Rat M-Mouse Mk-Monkey Dg-Dog Ch-Chicken Hm-Hamster Rb-Rabbit Sh-Sheep Pg-Pig Z-Zebrafish X-Xenopus C-Cow.