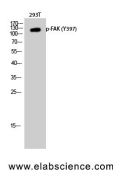


Phospho-FAK (Tyr397) Polyclonal Antibody

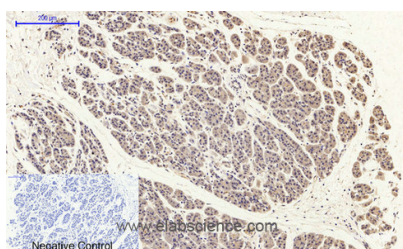
Catalog No.	E-AB-21207	Reactivity	H,M,R
Storage	Store at -20°C. Avoid freeze / thaw cycles.	Host	Rabbit
Applications	WB,IHC-p,ELISA	Isotype	IgG

Note: Centrifuge before opening to ensure complete recovery of vial contents.

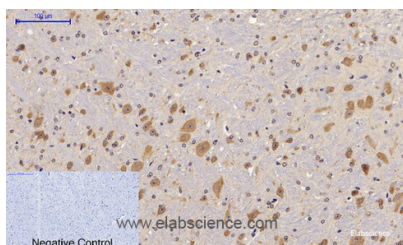
Images



Western Blot analysis of 293T cells with Phospho-FAK (Tyr397) Polyclonal Antibody at dilution of 1:1000



Immunohistochemistry of paraffin-embedded Human stomach cancer tissue with Phospho-FAK (Tyr397) Polyclonal Antibody at dilution of 1:200



Immunohistochemistry of paraffin-embedded Mouse brain tissue with Phospho-FAK (Tyr397) Polyclonal Antibody at dilution of 1:200

Immunogen Information

Immunogen	Synthesized peptide derived from human FAK around the phosphorylation site of Tyr397
Swissprot	Q05397
Synonyms	PTK2,FAK,FAK1,Focal adhesion kinase 1,FADK1,Focal adhesion kinase-related nonkinase,FRNK,Protein phosphatase 1 regulatory subunit 71,PPP1R71,Protein-tyrosine kinase 2,p125FAK,pp125FAK

Product Information

Calculated MW	119kDa
Observed MW	119kDa
Buffer	PBS with 0.02% sodium azide, 0.5% protective protein and 50% glycerol, pH7.4
Purify	Affinity purification
Dilution	WB 1:500-1:2000, IHC 1:100-1:300, ELISA 1:5000

Background

Non-receptor protein-tyrosine kinase implicated in signaling pathways involved in cell motility, proliferation and apoptosis. Activated by tyrosine-phosphorylation in response to either integrin clustering induced by cell adhesion or antibody cross-linking, or via G-protein coupled receptor (GPCR) occupancy by ligands such as bombesin or lysophosphatidic acid, or via LDL receptor occupancy. Microtubule-induced dephosphorylation at Tyr-397 is crucial for the induction of focal adhesion disassembly. Plays a potential role in oncogenic transformations resulting in increased kinase activity.

For Research Use Only

Thank you for your recent purchase.
 If you would like to learn more about antibodies, please visit www.elabscience.com.

Focus on your research
Service for life science

Applications:WB-Western Blot IHC-Immunohistochemistry IF-Immunofluorescence IP-Immunoprecipitation FC-Flow cytometry ChIP-Chromatin Immunoprecipitation Reactivity: H-Human R-Rat M-Mouse Mk-Monkey Dg-Dog Ch-Chicken Hm-Hamster Rb-Rabbit Sh-Sheep Pg-Pig Z-Zebrafish X-Xenopus C-Cow.