

Recombinant Human Interleukin-17A/IL-17A Protein

Catalog No. PKSH032620

Note: Centrifuge before opening to ensure complete recovery of vial contents.

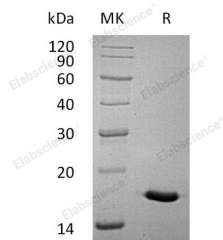
Description

Synonyms	Interleukin-17A;IL-17;IL-17A;Cytotoxic T-Lymphocyte-Associated Antigen 8;CTLA-8;IL17A;CTLA8;IL17
Species	Human
Expression Host	E.coli
Sequence	Ile20-Ala155
Accession	Q16552
Calculated Molecular Weight	16.5 kDa
Observed molecular weight	17 kDa
Tag	C-His
Bioactivity	Measure by its ability to induce IL-6 secretion in 3T3 cells. The ED ₅₀ for this effect is < 6 ng/mL.

Properties

Purity	> 98 % as determined by reducing SDS-PAGE.
Endotoxin	< 0.01 EU per µg of the protein as determined by the LAL method.
Storage	Generally, lyophilized proteins are stable for up to 12 months when stored at -20 to -80°C. Reconstituted protein solution can be stored at 4-8°C for 2-7 days. Aliquots of reconstituted samples are stable at < -20°C for 3 months.
Shipping	This product is provided as lyophilized powder which is shipped with ice packs.
Formulation	Lyophilized from sterile PBS,pH 8.0. Normally 5 % - 8 % trehalose, mannitol and 0.01% Tween80 are added as protectants before lyophilization. Please refer to the specific buffer information in the printed manual.
Reconstitution	Please refer to the printed manual for detailed information.

Data



> 98 % as determined by reducing SDS-PAGE.

Background

For Research Use Only

Interleukin-17 is a potent pro-inflammatory cytokine produced by activated memory T cells. There are at least six members of the IL-17 family in humans and in mice. As IL-17 shares properties with IL-1 and TNF-alpha; it may induce joint inflammation and bone and cartilage destruction. This cytokine is found in synovial fluids of patients with rheumatoid arthritis; and produced by rheumatoid arthritis synovium. It increases IL-6 production; induces collagen degradation and decreases collagen synthesis by synovium and cartilage and proteoglycan synthesis in cartilage. IL-17 is also able to increase bone destruction and reduce its formation. Blocking of interleukin-17 with specific inhibitors provides a protective inhibition of cartilage and bone degradation.