

PE Anti-Mouse CD1d Antibody[19G11]

Catalog No.	E-AB-F1032UD	Reactivity	Mouse
Storage	Store at 2~8°C, Avoid freeze / thaw cycles	Applications	FCM

Important Note: Centrifuge before opening to ensure complete recovery of vial contents.

Antigen Information

Alternate Names	Antigen-presenting glycoprotein CD1d1,Cd1d1,CD1d.1,Cd1d1,Cd1.1
Uniprot ID	P11609
Background	CD1d is a type I transmembrane protein and member of the MHC family, with a molecular weight ranging from 43-49 kD, depending on the glycosylation degree. CD1d is expressed by antigen presenting cells such as dendritic cells, monocytes, macrophages and B cells; also expressed by thymocytes and intestinal epithelial cells. CD1d present glycolipids to iNKT cells that recognize them by their V α 14i TCR.

Product Details

Form	Liquid
Concentration	0.2 mg/mL
Size	25 μ g/100 μ g
Clone No.	19G11
Host	Rat
Isotype	Rat IgG2b, κ
Reactivity	Mouse
Application	FCM
Isotype Control	PE Rat IgG2b, κ Isotype Control[LTF-2] [Product E-AB-F09843D]
Storage Buffer	Phosphate buffered solution, pH 7.2, containing 0.09% stabilizer and 1% protein protectant.
Shipping	Biological ice pack at 4 °C
Stability & Storage	Keep as concentrated solution. Store at 2~8°C and protected from prolonged exposure to light.Do not freeze. This product is guaranteed up to one year from purchase.

For Research Use Only

Fluorophore

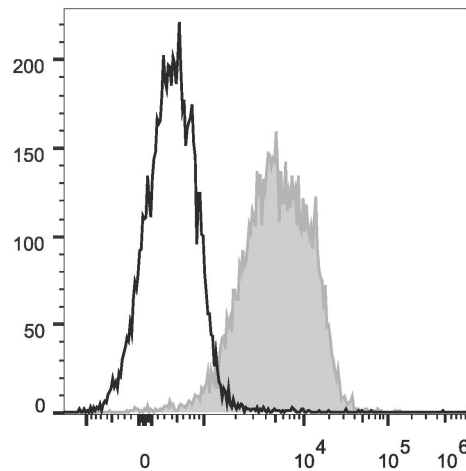
Conjugation: PE

PE is designed to be excited by the Blue (488 nm), Green (532 nm) and Yellow-Green (561 nm) lasers and detected using an optical filter centered near 575 nm (e.g., a 585/42 nm bandpass filter).

Recommended usage

Each lot of this antibody is quality control tested by flow cytometric analysis. Please check your vial before the experiment. Since applications vary, the appropriate dilutions must be determined for individual use. We suggest each investigator should titrate the reagent to obtain optimal results [The recommended concentration is 0.1-1 µg/10⁶ cells in 100 µL volume].

Product data



C57BL/6 murine splenocytes are stained with PE Anti-Mouse CD1d Antibody (filled gray histogram). Unstained splenocytes (empty black histogram) are used as control.

Related Information

1. Sample Preparation for Flow Cytometry <https://www.elabscience.com/List-detail-5594.html>
2. Staining Cell Surface Targets for Flow Cytometry <https://www.elabscience.com/List-detail-5568.html>
3. Flow Cytometry Troubleshooting Tips <https://www.elabscience.com/List-detail-5593.html>
4. How to select the appropriate detection channel through the spectrogram? <https://www.elabscience.com/List-detail-459742.html>

For Research Use Only