

Recombinant Human IL-6/Interleukin-6 Protein

Catalog Number:PKSH033611



Note: Centrifuge before opening to ensure complete recovery of vial contents.

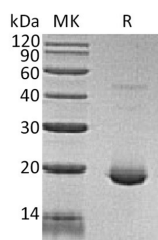
Description

Synonyms	Interleukin-6;IL-6;B-Cell Stimulatory Factor 2;BSF-2;CTL Differentiation Factor;CDF;Hybridoma Growth Factor;Interferon Beta-2;IFN-Beta-2;IL6;IFNB2;BSF2;HGF;HSF;IFNB2
Species	Human
Expression Host	E.coli
Sequence	Val30-Met212
Accession	P05231
Calculated Molecular Weight	21.8 kDa
Observed molecular weight	22 kDa
Tag	C-His

Properties

Purity	> 98 % as determined by reducing SDS-PAGE.
Endotoxin	< 0.1 EU per µg of the protein as determined by the LAL method.
Storage	Generally, lyophilized proteins are stable for up to 12 months when stored at -20 to -80°C. Reconstituted protein solution can be stored at 4-8°C for 2-7 days. Aliquots of reconstituted samples are stable at < -20°C for 3 months.
Shipping	This product is provided as lyophilized powder which is shipped with ice packs.
Formulation	Lyophilized from sterile PBS,pH 8.0. Normally 5 % - 8 % trehalose, mannitol and 0.01% Tween80 are added as protectants before lyophilization. Please refer to the specific buffer information in the printed manual.
Reconstitution	Please refer to the printed manual for detailed information.

Data



> 98 % as determined by reducing SDS-PAGE.

Background

Cytokines of the IL6/GCSF/MGF family are glycoproteins of about 170 to 180 amino acid residues that contain four conserved cysteine residues involved in two disulfide bonds. They have a compact, globular fold (similar to other interleukins), stabilized by the 2 disulfide bonds. One half of the structure is dominated by a 4 alpha-helix bundle with a left-handed twist; the helices are anti-parallel, with 2 overhand connections, which fall into a 2-stranded anti-parallel beta-sheet. The fourth alpha helix is important to the biological activity of the molecule. Interleukin-6 (IL-6) is an important proinflammatory and immunoregulatory cytokine expressed by various cells. Interleukin-6 has been shown to inhibit the

For Research Use Only

A Reliable Research Partner in Life Science and Medicine

Toll-free: 1-888-852-8623

Web: www.elabscience.com

Tel: 1-832-243-6086

Email: techsupport@elabscience.com

Fax: 1-832-243-6017

Recombinant Human IL-6/Interleukin-6 Protein

Catalog Number:PKSH033611



growth of early stage and to promote the proliferation of advanced stage melanoma cells in vitro.

For Research Use Only

A Reliable Research Partner in Life Science and Medicine

Toll-free: 1-888-852-8623

Tel: 1-832-243-6086

Fax: 1-832-243-6017

Web: www.elabscience.com

Email: techsupport@elabscience.com