

Recombinant Cynomolgus CSF1R/CD115 Protein (His Tag)

Catalog No. PKSQ050034

Note: Centrifuge before opening to ensure complete recovery of vial contents.

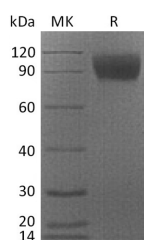
Description

Synonyms	Macrophage colony-stimulating factor 1 receptor;CSF-1 receptor;CSF-1-R;CSF-1R;M-CSF-R;Proto-oncogene c-Fms;CD115;CSF1R;FMS;MCSF Receptor
Species	Cynomolgus macaques
Expression Host	HEK293 Cells
Sequence	Ile20-Pro517
Accession	XP_005558297.1
Calculated Molecular Weight	56.1 kDa
Observed molecular weight	80-120 kDa
Tag	C-His

Properties

Purity	> 95 % as determined by reducing SDS-PAGE.
Endotoxin	< 1.0 EU per µg of the protein as determined by the LAL method.
Storage	Generally, lyophilized proteins are stable for up to 12 months when stored at -20 to -80°C. Reconstituted protein solution can be stored at 4-8°C for 2-7 days. Aliquots of reconstituted samples are stable at < -20°C for 3 months.
Shipping	This product is provided as lyophilized powder which is shipped with ice packs.
Formulation	Lyophilized from a 0.2 µm filtered solution of PBS, pH 7.4. Normally 5 % - 8 % trehalose, mannitol and 0.01% Tween80 are added as protectants before lyophilization. Please refer to the specific buffer information in the printed manual.
Reconstitution	Please refer to the printed manual for detailed information.

Data



> 95 % as determined by reducing SDS-PAGE.

Background

Macrophage colony-stimulating factor 1 receptor (CSF1R) is a member of the type III subfamily of receptor tyrosine

For Research Use Only

kinases that also includes receptors for SCF and PDGF. These receptors each contain five immunoglobulin-like domains in their extracellular domain (ECD) and a split kinase domain in their intracellular region. CSF1R is expressed primarily on cells of the monocyte/macrophage lineage, dendritic cells, stem cells and in the developing placenta. CSF1 and its receptor (CSF1R, product of c-fms proto-oncogene) were initially implicated as essential for normal monocyte development as well as for trophoblastic implantation. It plays an important role in the regulation of osteoclast proliferation and differentiation, the regulation of bone resorption, and is required for normal bone and tooth development. It is required for normal male and female fertility, and for normal development of milk ducts and acinar structures in the mammary gland during pregnancy. Aberrant expression of CSF1 or CSF1R may play a role in inflammatory diseases, such as rheumatoid arthritis, glomerulonephritis, atherosclerosis, and allograft rejection.