

Recombinant Cynomolgus CD40/TNFRSF5/CD40L Receptor Protein (Fc Tag)



Catalog Number:PKSQ050044

Note: Centrifuge before opening to ensure complete recovery of vial contents.

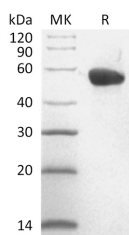
Description

Synonyms	Tumor Necrosis Factor Receptor Superfamily member 5;B-Cell Surface Antigen CD40;Bp50;CD40L Receptor;CDw40;CD40;TNFRSF5
Species	Cynomolgus macaques
Expression Host	HEK293 Cells
Sequence	Glu21-Arg193
Accession	XP_005569275.1
Calculated Molecular Weight	46.3 kDa
Observed molecular weight	48-70 kDa
Tag	C-Fc

Properties

Purity	> 95 % as determined by reducing SDS-PAGE.
Endotoxin	< 1.0 EU per µg of the protein as determined by the LAL method.
Storage	Generally, lyophilized proteins are stable for up to 12 months when stored at -20 to -80°C. Reconstituted protein solution can be stored at 4-8°C for 2-7 days. Aliquots of reconstituted samples are stable at < -20°C for 3 months.
Shipping	This product is provided as lyophilized powder which is shipped with ice packs.
Formulation	Lyophilized from a 0.2 µm filtered solution of 50 mM Tris-HCl, 100 mM Glycine, pH 7.5. Normally 5 % - 8 % trehalose, mannitol and 0.01 % Tween80 are added as protectants before lyophilization. Please refer to the specific buffer information in the
Reconstitution	Please refer to the printed manual for detailed information.

Data



> 95 % as determined by reducing SDS-PAGE.

Background

CD40 is a Type I Transmembrane Glycoprotein that belongs to the TNF Receptor Superfamily. CD40 is expressed in B cells, follicular dendritic cells, dendritic cells, activated monocytes, macrophages, endothelial cells, vascular smooth muscle cells, and several tumor cell lines. The extracellular domain of CD40 is characterized by Cysteine rich repeat regions. Interaction of CD40 with its ligand (CD40L) leads to aggregation of CD40 molecules, which in turn interact with cytoplasmic components to initiate signaling pathways. Several different TRAF proteins (adaptor proteins) have been identified to serves as mediators of the signal transduction.

For Research Use Only

A Reliable Research Partner in Life Science and Medicine

Toll-free: 1-888-852-8623

Web: www.elabscience.com

Tel: 1-832-243-6086

Email: techsupport@elabscience.com

Fax: 1-832-243-6017