

GFAP Monoclonal Antibody

Catalog Number:E-AB-22022

Note: Centrifuge before opening to ensure complete recovery of vial contents.

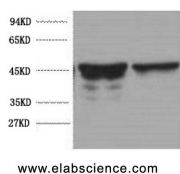
Description

Reactivity	Mouse,Rat
Immunogen	Synthetic Peptide
Host	Mouse
Isotype	IgG
Clone	Clone:3H1
Purification	Protein A purification
Conjugation	Unconjugated
Formulation	PBS with 0.02% sodium azide and 50% glycerol pH 7.4.

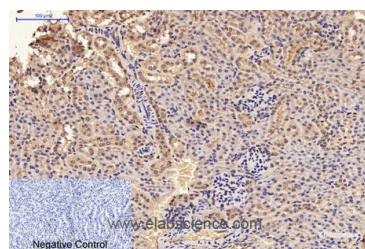
Applications Recommended Dilution

WB	1:500-1:5000
IHC	1:50-1:300
IF	1:100-1:300

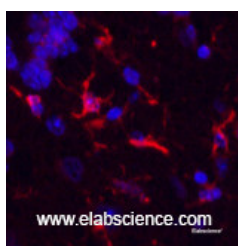
Data



Western Blot analysis of Rat brain using GFAP Monoclonal Antibody at dilution of 1:5000.
Observed Mw:45kDa
Calculated Mw:50kDa



Immunohistochemistry of paraffin-embedded Mouse kidney tissue using GFAP Monoclonal Antibody at dilution of 1:200.



Immunofluorescence analysis of Mouse brain tissue using GFAP Monoclonal Antibody at dilution of 1:200.

Preparation & Storage

Storage Store at -20°C. Avoid freeze / thaw cycles.

Background

For Research Use Only

A Reliable Research Partner in Life Science and Medicine

Toll-free: 1-888-852-8623

Web: www.elabscience.com

Tel: 1-832-243-6086

Email: techsupport@elabscience.com

Fax: 1-832-243-6017

GFAP Monoclonal Antibody

Catalog Number: E-AB-22022



This gene encodes one of the major intermediate filament proteins of mature astrocytes. It is used as a marker to distinguish astrocytes from other glial cells during development. Mutations in this gene cause Alexander disease, a rare disorder of astrocytes in the central nervous system. Alternative splicing results in multiple transcript variants encoding distinct isoforms.

For Research Use Only

A Reliable Research Partner in Life Science and Medicine

Toll-free: 1-888-852-8623

Tel: 1-832-243-6086

Fax: 1-832-243-6017

Web: www.elabscience.com

Email: techsupport@elabscience.com