

Phospho-Na⁺/K⁺-ATPase alpha1 (Ser23) Polyclonal Antibody



Catalog Number:E-AB-21117

Note: Centrifuge before opening to ensure complete recovery of vial contents.

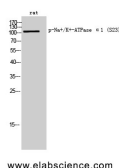
Description

Reactivity	Rat
Immunogen	Synthesized peptide derived from human Na ⁺ /K ⁺ -ATPase α1 around the phosphorylation site of Ser23
Host	Rabbit
Isotype	IgG
Purification	Affinity purification
Conjugation	Unconjugated
Formulation	PBS with 0.02% sodium azide, 0.5% protective protein and 50% glycerol, pH7.4

Applications Recommended Dilution

WB	1:500-1:2000
IF	1:100-1:300
ELISA	1:5000

Data



Western Blot analysis of Rat cells with Phospho-Na⁺/K⁺-ATPase alpha1 (Ser23) Polyclonal Antibody

Observed Mw:113kDa
Calculated Mw:113kDa

Preparation & Storage

Storage Store at -20°C. Avoid freeze / thaw cycles.

Background

This is the catalytic component of the active enzyme, which catalyzes the hydrolysis of ATP coupled with the exchange of sodium and potassium ions across the plasma membrane. This action creates the electrochemical gradient of sodium and potassium ions, providing the energy for active transport of various nutrients.

For Research Use Only

A Reliable Research Partner in Life Science and Medicine

Toll-free: 1-888-852-8623

Web: www.elabscience.com

Tel: 1-832-243-6086

Email: techsupport@elabscience.com

Fax: 1-832-243-6017