

Phospho-RAF1 (Ser296) Polyclonal Antibody

Catalog Number:E-AB-21189



Note: Centrifuge before opening to ensure complete recovery of vial contents.

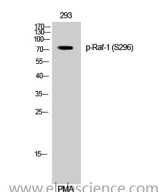
Description

Reactivity	Human,Mouse,Rat
Immunogen	Synthesized peptide derived from human Raf-1 around the phosphorylation site of S296.
Host	Rabbit
Isotype	IgG
Purification	Affinity purification
Formulation	PBS with 0.02% sodium azide, 0.5% protective protein and 50% glycerol, pH7.4

Applications Recommended Dilution

WB	1:500-1:2000
IHC	1:100-1:300
ELISA	1:20000

Data



Western Blot analysis of 293 cells using Phospho-RAF1 (Ser296) Polyclonal Antibody at dilution of 1:1000.

Observed Mw:74kDa
Calculated Mw:73kDa

Preparation & Storage

Storage Store at -20°C. Avoid freeze / thaw cycles.

Background

Involved in the transduction of mitogenic signals from the cell membrane to the nucleus. Part of the Ras-dependent signaling pathway from receptors to the nucleus. Protects cells from apoptosis mediated by STK3.

For Research Use Only

A Reliable Research Partner in Life Science and Medicine

Toll-free: 1-888-852-8623

Web: www.elabscience.com

Tel: 1-832-243-6086

Email: techsupport@elabscience.com

Fax: 1-832-243-6017