

# ADRA1A Polyclonal Antibody

Catalog Number: E-AB-30573



**Note:** Centrifuge before opening to ensure complete recovery of vial contents.

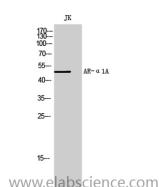
## Description

<b>Reactivity</b>	Human, Mouse, Rat
<b>Immunogen</b>	Synthesized peptide derived from the Internal region of human AR- $\alpha$ 1A
<b>Host</b>	Rabbit
<b>Isotype</b>	IgG
<b>Purification</b>	Affinity purification
<b>Formulation</b>	PBS with 0.02% sodium azide, 0.5% protective protein and 50% glycerol pH 7.4.

## Applications Recommended Dilution

<b>WB</b>	1:500-1:2000
<b>IF</b>	1:200-1:1000
<b>ELISA</b>	1:10000

## Data



Western Blot analysis of Jurkat cells with ADRA1A  
Polyclonal Antibody  
**Observed Mw: 51kDa**  
**Calculated Mw: 51kDa**

## Preparation & Storage

**Storage** Store at -20°C. Avoid freeze / thaw cycles.

## Background

This alpha-adrenergic receptor mediates its action by association with G proteins that activate a phosphatidylinositol-calcium second messenger system. Its effect is mediated by G(q) and G(11) proteins.

## For Research Use Only

A Reliable Research Partner in Life Science and Medicine

Toll-free: 1-888-852-8623

Web: [www.elabscience.com](http://www.elabscience.com)

Tel: 1-832-243-6086

Email: [techsupport@elabscience.com](mailto:techsupport@elabscience.com)

Fax: 1-832-243-6017