

CEBP delta/epsilon Polyclonal Antibody

Catalog Number:E-AB-30690



Note: Centrifuge before opening to ensure complete recovery of vial contents.

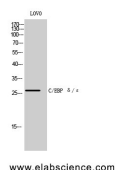
Description

Reactivity	Human,Mouse,Rat
Immunogen	Synthesized peptide derived from the C-terminal region of human C/EBP δ/ϵ
Host	Rabbit
Isotype	IgG
Purification	Affinity purification
Conjugation	Unconjugated
Formulation	PBS with 0.02% sodium azide, 0.5% protective protein and 50% glycerol, pH7.4

Applications Recommended Dilution

WB	1:500-1:2000
IHC	1:100-1:300
IF	1:200-1:1000
ELISA	1:20000

Data



Western Blot analysis of LOVO cells using CEBP delta/epsilon Polyclonal Antibody at dilution of 1:500.

Observed Mw:28kDa

Calculated Mw:28kDa

Preparation & Storage

Storage Store at -20°C. Avoid freeze / thaw cycles.

Background

CEBPD (CCAAT/Enhancer Binding Protein Delta) is a Protein Coding gene. Diseases associated with CEBPD include Leukoencephalopathy With Vanishing White Matter. Among its related pathways are Validated targets of C-MYC transcriptional repression and C-MYB transcription factor network. GO annotations related to this gene include transcription factor activity, sequence-specific DNA binding and RNA polymerase II core promoter proximal region sequence-specific DNA binding. An important paralog of this gene is CEBPB. CEBPE (CCAAT/Enhancer Binding Protein Epsilon) is a Protein Coding gene. Diseases associated with CEBPE include Specific Granule Deficiency and Neutrophil-Specific Granule Deficiency. Among its related pathways are Transcriptional misregulation in cancer. GO annotations related to this gene include transcription factor activity, sequence-specific DNA binding and sequence-specific DNA binding. An important paralog of this gene is CEBPA.

For Research Use Only

A Reliable Research Partner in Life Science and Medicine

Toll-free: 1-888-852-8623

Web: www.elabscience.com

Tel: 1-832-243-6086

Email: techsupport@elabscience.com

Fax: 1-832-243-6017