

CAMKK2 Polyclonal Antibody

Catalog Number:E-AB-30731



Note: Centrifuge before opening to ensure complete recovery of vial contents.

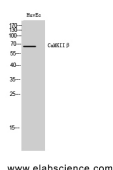
Description

Reactivity	Human,Mouse,Rat
Immunogen	Synthesized peptide derived from the Internal region of human CaMKII β
Host	Rabbit
Isotype	IgG
Purification	Affinity purification
Conjugation	Unconjugated
Formulation	PBS with 0.02% sodium azide, 0.5% protective protein and 50% glycerol, pH7.4

Applications Recommended Dilution

WB	1:500-1:2000
IHC	1:100-1:300
ELISA	1:10000

Data



Western Blot analysis of HuvEc cells with CaMKK2
Polyclonal Antibody.
Observed Mw:65kDa
Calculated Mw:65kDa

Preparation & Storage

Storage Store at -20°C. Avoid freeze / thaw cycles.

Background

Calcium/calmodulin-dependent protein kinase belonging to a proposed calcium-triggered signaling cascade involved in a number of cellular processes. Isoform 1, isoform 2 and isoform 3 phosphorylate CAMK1 and CAMK4. Isoform 3 phosphorylates CAMK1D. Isoform 4, isoform 5 and isoform 6 lacking part of the calmodulin-binding domain are inactive. Seems to be involved in hippocampal activation of CREB1.

For Research Use Only

A Reliable Research Partner in Life Science and Medicine

Toll-free: 1-888-852-8623

Web: www.elabscience.com

Tel: 1-832-243-6086

Email: techsupport@elabscience.com

Fax: 1-832-243-6017