

SOD1 Polyclonal Antibody

Catalog Number:E-AB-32938



Note: Centrifuge before opening to ensure complete recovery of vial contents.

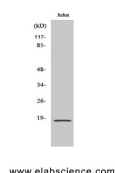
Description

Reactivity	Human,Mouse,Rat
Immunogen	Synthesized peptide derived from the Internal region of human SOD-1.
Host	Rabbit
Isotype	IgG
Purification	Affinity purification
Conjugation	Unconjugated
Formulation	PBS with 0.02% sodium azide, 0.5% protective protein and 50% glycerol, pH7.4

Applications Recommended Dilution

WB	1:500-1:2000
ELISA	1:10000

Data



Western Blot analysis of Jurkat cells using SOD1
Polyclonal Antibody at dilution of 1:1000.

Observed Mw:18kDa
Calculated Mw:16kDa

Preparation & Storage

Storage Store at -20°C. Avoid freeze / thaw cycles.

Background

Destroys radicals which are normally produced within the cells and which are toxic to biological systems.

For Research Use Only

A Reliable Research Partner in Life Science and Medicine

Toll-free: 1-888-852-8623

Web: www.elabscience.com

Tel: 1-832-243-6086

Email: techsupport@elabscience.com

Fax: 1-832-243-6017