

DCP1A Polyclonal Antibody

Catalog Number:E-AB-11140

Note: Centrifuge before opening to ensure complete recovery of vial contents.

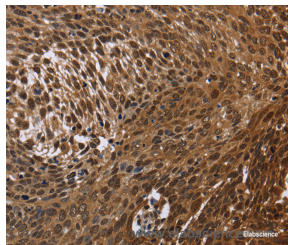
Description

| | |
|---------------------|---|
| Reactivity | Human,Mouse |
| Immunogen | Recombinant protein of human DCP1A |
| Host | Rabbit |
| Isotype | IgG |
| Purification | Affinity purification |
| Conjugation | Unconjugated |
| Formulation | PBS with 0.05% sodium azide and 50% glycerol, PH7.4 |

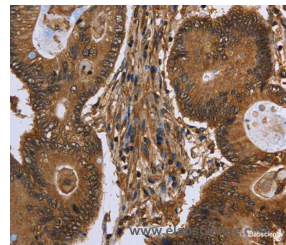
Applications Recommended Dilution

| | |
|------------|-------------|
| IHC | 1:100-1:300 |
|------------|-------------|

Data



Immunohistochemistry of paraffin-embedded Human cervical cancer tissue using DCP1A Polyclonal Antibody at dilution 1:50



Immunohistochemistry of paraffin-embedded Human colon cancer tissue using DCP1A Polyclonal Antibody at dilution 1:50

Preparation & Storage

Storage Store at -20°C. Avoid freeze / thaw cycles.

Background

Decapping is a key step in general and regulated mRNA decay. The protein encoded by this gene is a decapping enzyme. This protein and another decapping enzyme form a decapping complex, which interacts with the nonsense-mediated decay factor hUpf1 and may be recruited to mRNAs containing premature termination codons. This protein also participates in the TGF-beta signaling pathway. Alternative splicing of this gene results in multiple transcript variants.

For Research Use Only

A Reliable Research Partner in Life Science and Medicine

Toll-free: 1-888-852-8623

Web: www.elabscience.com

Tel: 1-832-243-6086

Email: techsupport@elabscience.com

Fax: 1-832-243-6017