

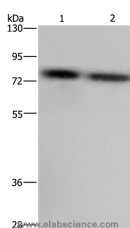
PABPC1 Polyclonal Antibody

Catalog No. E-AB-11389
Storage Store at -20°C. Avoid freeze / thaw cycles.
Applications WB,ELISA

Reactivity H,M,R
Host Rabbit
Isotype IgG

Note: Centrifuge before opening to ensure complete recovery of vial contents.

Images



Western Blot analysis of LoVo and Hela cell using PABPC1 Polyclonal Antibody at dilution of 1:500

Immunogen Information

Immunogen Recombinant protein of human PABPC1
Gene Accession BC015958
Swissprot P11940
Synonyms PAB1,PABP,PABP1,PABPC2,PABPL1

Product Information

Calculated MW 71kDa
Buffer PBS with 0.05% sodium azide and 50% glycerol, PH7.4
Purify Affinity purification
Dilution WB 1:200-1:1000

Background

This gene encodes a poly(A) binding protein. The protein shuttles between the nucleus and cytoplasm and binds to the 3' poly(A) tail of eukaryotic messenger RNAs via RNA-recognition motifs. The binding of this protein to poly(A) promotes ribosome recruitment and translation initiation; it is also required for poly(A) shortening which is the first step in mRNA decay. The gene is part of a small gene family including three protein-coding genes and several pseudogenes.