

# IL18 Polyclonal Antibody

Catalog Number:E-AB-14154

1 Publications



**Note:** Centrifuge before opening to ensure complete recovery of vial contents.

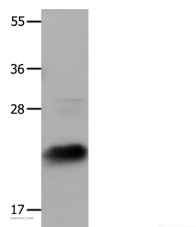
## Description

<b>Reactivity</b>	Human
<b>Immunogen</b>	Recombinant protein of human IL18
<b>Host</b>	Rabbit
<b>Isotype</b>	IgG
<b>Purification</b>	Affinity purification
<b>Conjugation</b>	Unconjugated
<b>Formulation</b>	PBS with 0.05% sodium azide and 50% glycerol, PH7.4

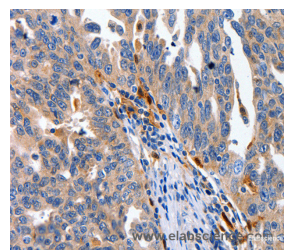
## Applications Recommended Dilution

<b>WB</b>	1:1000-1:2000
<b>IHC</b>	1:100-1:200

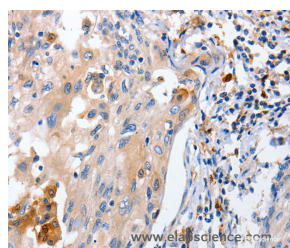
## Data



Western Blot analysis of HeLa cells using IL18 Polyclonal Antibody at dilution of 1:1350  
**Calculated Mw:22kDa**



Immunohistochemistry of paraffin-embedded Human ovarian cancer using IL18 Polyclonal Antibody at dilution of 1:100



Immunohistochemistry of paraffin-embedded Human cervical cancer using IL18 Polyclonal Antibody at dilution of 1:100

## Preparation & Storage

**Storage** Store at -20°C. Avoid freeze / thaw cycles.

## Background

The protein encoded by this gene is a proinflammatory cytokine that augments natural killer cell activity in spleen cells, and stimulates interferon gamma production in T-helper type I cells. Alternatively spliced transcript variants encoding different isoforms have been found for this gene

## For Research Use Only

A Reliable Research Partner in Life Science and Medicine

Toll-free: 1-888-852-8623

Web: [www.elabscience.com](http://www.elabscience.com)

Tel: 1-832-243-6086

Email: [techsupport@elabscience.com](mailto:techsupport@elabscience.com)

Fax: 1-832-243-6017