

ARSF Polyclonal Antibody

Catalog Number:E-AB-14630



Note: Centrifuge before opening to ensure complete recovery of vial contents.

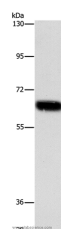
Description

Reactivity	Human
Immunogen	Recombinant protein of human ARSF
Host	Rabbit
Isotype	IgG
Purification	Affinity purification
Conjugation	Unconjugated
Formulation	PBS with 0.05% sodium azide and 50% glycerol, PH7.4

Applications Recommended Dilution

WB	1:200-1:1000
-----------	--------------

Data



Western Blot analysis of Human placenta tissue using
ARSF Polyclonal Antibody at dilution of 1:216.7

Calculated Mw:66kDa

Preparation & Storage

Storage	Store at -20°C. Avoid freeze / thaw cycles.
----------------	---

Background

This gene is a member of the sulfatase family, and more specifically, the arylsulfatase subfamily. Members of the subfamily share similarity in sequence and splice sites, and are clustered together on chromosome X, suggesting that they are derived from recent gene duplication events. Sulfatases are essential for the correct composition of bone and cartilage matrix. The activity of this protein, unlike that of arylsulfatase E, is not inhibited by warfarin. Multiple alternatively spliced variants, encoding the same protein, have been identified.

For Research Use Only

A Reliable Research Partner in Life Science and Medicine

Toll-free: 1-888-852-8623

Web: www.elabscience.com

Tel: 1-832-243-6086

Email: techsupport@elabscience.com

Fax: 1-832-243-6017