

Recombinant SARS-CoV-2 S1+S2 Protein (ECD, His Tag)

Catalog No. PKSR030498

Note: Centrifuge before opening to ensure complete recovery of vial contents.

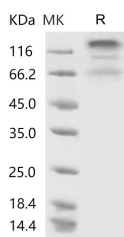
Description

Synonyms	2019-nCov S protein;2019-nCoV Spike glycoprotein;2019-nCoV S glycoprotein
Species	SARS-CoV-2
Expression Host	Baculovirus-Insect Cells
Sequence	Val16-Pro1213
Accession	YP_009724390.1
Calculated Molecular Weight	134.4 kDa
Tag	C-His
Bioactivity	The Recombinant 2019-nCoV S1+S2 Protein (ECD, His Tag) can bind with Human ACE2 in functional ELISA assay.

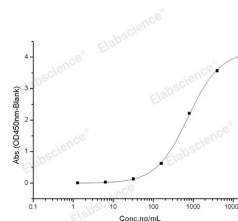
Properties

Purity	> 90 % as determined by reducing SDS-PAGE.
Endotoxin	< 1.0 EU per µg of the protein as determined by the LAL method.
Storage	Generally, lyophilized proteins are stable for up to 12 months when stored at -20 to -80°C. Reconstituted protein solution can be stored at 4-8°C for 2-7 days. Aliquots of reconstituted samples are stable at < -20°C for 3 months.
Shipping	This product is provided as lyophilized powder which is shipped with ice packs.
Formulation	Lyophilized from sterile 20 mM Tris, 300 mM NaCl, 10 % glycerol, pH 8.0. Normally 5% - 8% trehalose, mannitol and 0.01% Tween 80 are added as protectants before lyophilization. Please refer to the specific buffer information in the printed manual.
Reconstitution	Please refer to the printed manual for detailed information.

Data



> 90 % as determined by reducing SDS-PAGE.



Immobilized human ACE2 protein (Fc tag) at 2 µg/mL (100 µL/well) can bind Recombinant 2019-nCoV S1+S2 Protein (ECD, His Tag), the EC50 of Recombinant 2019-nCoV S1+S2 Protein (ECD, His Tag) is 400-1200 ng/mL.

For Research Use Only

Background

The spike (S) glycoprotein of coronaviruses contains protrusions that will only bind to certain receptors on the host cell. Known receptors bind S1 are ACE2, angiotensin-converting enzyme 2; DPP4, dipeptidyl peptidase-4; APN, aminopeptidase N; CEACAM, carcinoembryonic antigen-related cell adhesion molecule 1; Sia, sialic acid; O-ac Sia, O-acetylated sialic acid. The spike is essential for both host specificity and viral infectivity. The spike (S) glycoprotein of coronaviruses is known to be essential in the binding of the virus to the host cell at the advent of the infection process. It's been reported that SARS-CoV-2 (COVID-19 coronavirus, 2019-nCoV) can infect the human respiratory epithelial cells through interaction with the human ACE2 receptor. The spike protein is a large type I transmembrane protein containing two subunits, S1 and S2. S1 mainly contains a receptor binding domain (RBD), which is responsible for recognizing the cell surface receptor. S2 contains basic elements needed for the membrane fusion. The S protein plays key parts in the induction of neutralizing-antibody and T-cell responses, as well as protective immunity. The main functions for the Spike protein are summarized as: Mediate receptor binding and membrane fusion; Defines the range of the hosts and specificity of the virus; Main component to bind with the neutralizing antibody; Key target for vaccine design; Can be transmitted between different hosts through gene recombination or mutation of the receptor binding domain (RBD), leading to a higher mortality rate.

For Research Use Only