

Recombinant MERS-CoV Spike/RBD Protein fragment (RBD, aa 367-606, His Tag), Biotinylated

Catalog No. PKSV030238

Note: Centrifuge before opening to ensure complete recovery of vial contents.

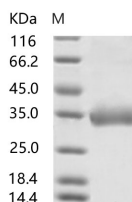
Description

Synonyms	coronavirus s1 Protein;MERS-CoV;coronavirus s2 Protein;MERS-CoV;coronavirus spike Protein;MERS-CoV;cov spike Protein;MERS-CoV;ncov RBD Protein;MERS-CoV;ncov s1 Protein;MERS-CoV;ncov s2 Protein;MERS-CoV;ncov spike Protein;MERS-CoV;RBD Protein;MERS-CoV;S Protein;MERS-CoV;s1 Protein;MERS-CoV;Spike RBD Protein;MERS-CoV
Species	MERS-CoV
Expression Host	Baculovirus-Insect Cells
Sequence	Glu367-Tyr606
Accession	AFS88936.1
Calculated Molecular Weight	27.7 kDa.
Tag	C-His

Properties

Purity	> 95 % as determined by reducing SDS-PAGE.
Endotoxin	< 1.0 EU per µg of the protein as determined by the LAL method.
Storage	Generally, lyophilized proteins are stable for up to 12 months when stored at -20 to -80°C. Reconstituted protein solution can be stored at 4-8°C for 2-7 days. Aliquots of reconstituted samples are stable at < -20°C for 3 months.
Shipping	This product is provided as lyophilized powder which is shipped with ice packs.
Formulation	Lyophilized from sterile PBS. Normally 5 % - 8 % trehalose, mannitol and 0.01% Tween80 are added as protectants before lyophilization. Please refer to the specific buffer information in the printed manual.
Reconstitution	Please refer to the printed manual for detailed information.

Data



> 95 % as determined by reducing SDS-PAGE.

For Research Use Only

Background

The spike (S) glycoprotein of coronaviruses contains protrusions that will only bind to certain receptors on the host cell. Known receptors bind S1 are ACE2, angiotensin-converting enzyme 2; DPP4, dipeptidyl peptidase-4; APN, aminopeptidase N; CEACAM, carcinoembryonic antigen-related cell adhesion molecule 1; Sia, sialic acid; O-ac Sia, O-acetylated sialic acid. The spike is essential for both host specificity and viral infectivity. The spike (S) glycoprotein of coronaviruses is known to be essential in the binding of the virus to the host cell at the advent of the infection process. It's been reported that SARS-CoV-2 (COVID-19 coronavirus, 2019-nCoV) can infect the human respiratory epithelial cells through interaction with the human ACE2 receptor. The spike protein is a large type I transmembrane protein containing two subunits, S1 and S2. S1 mainly contains a receptor binding domain (RBD), which is responsible for recognizing the cell surface receptor. S2 contains basic elements needed for the membrane fusion. The S protein plays key parts in the induction of neutralizing-antibody and T-cell responses, as well as protective immunity. The main functions for the Spike protein are summarized as: Mediate receptor binding and membrane fusion; Defines the range of the hosts and specificity of the virus; Main component to bind with the neutralizing antibody; Key target for vaccine design; Can be transmitted between different hosts through gene recombination or mutation of the receptor binding domain (RBD), leading to a higher mortality rate.

For Research Use Only