

MZF1 Polyclonal Antibody

Catalog Number:E-AB-63360

Note: Centrifuge before opening to ensure complete recovery of vial contents.

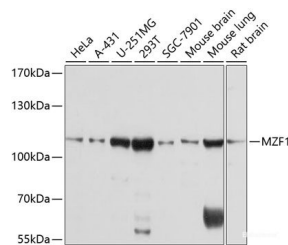
Description

Reactivity	Human,Mouse,Rat
Immunogen	Recombinant fusion protein of human MZF1 (NP_003413.2).
Host	Rabbit
Isotype	IgG
Purification	Affinity purification
Conjugation	Unconjugated
Formulation	PBS with 0.02% sodium azide, 50% glycerol, pH7.3.

Applications Recommended Dilution

WB	1:500-1:2000
-----------	--------------

Data



Western blot analysis of extracts of various cell lines using MZF1 Polyclonal Antibody at dilution of 1:1000.

Observed Mw:110kDa

Calculated Mw:31kDa/54kDa/82kDa

Preparation & Storage

Storage Store at -20°C. Avoid freeze / thaw cycles.

Background

MZF1 (Myeloid Zinc Finger 1) is a Protein Coding gene. Diseases associated with MZF1 include Inflammatory Bowel Disease 27 and Lung Squamous Cell Carcinoma. Among its related pathways are Ectoderm Differentiation. Gene Ontology (GO) annotations related to this gene include DNA-binding transcription factor activity and RNA polymerase II proximal promoter sequence-specific DNA binding. An important paralog of this gene is ZNF33B.

For Research Use Only

A Reliable Research Partner in Life Science and Medicine

Toll-free: 1-888-852-8623

Web: www.elabscience.com

Tel: 1-832-243-6086

Email: techsupport@elabscience.com

Fax: 1-832-243-6017