

Recombinant Human Endocan/ESM-1 (C-6His)

Catalog No. PKSH033878

Note: Centrifuge before opening to ensure complete recovery of vial contents.

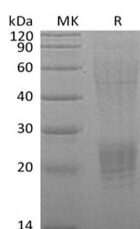
Description

Synonyms	Endothelial Cell-Specific Molecule 1; ESM-1; ESM1
Species	Human
Expression Host	Human Cells
Sequence	Trp20-Arg184
Accession	AAH11989.1
Calculated Molecular Weight	19.2 kDa
Observed molecular weight	18-27 kDa
Tag	C-6His

Properties

Purity	> 90 % as determined by reducing SDS-PAGE.
Endotoxin	< 1.0 EU per µg as determined by the LAL method.
Storage	Generally, lyophilized proteins are stable for up to 12 months when stored at -20 to -80°C. Reconstituted protein solution can be stored at 4-8°C for 2-7 days. Aliquots of reconstituted samples are stable at < -20°C for 3 months.
Shipping	This product is provided as lyophilized powder which is shipped with ice packs.
Formulation	Lyophilized from a 0.2 µm filtered solution of 20mM PB, 150mM NaCl, pH 7.2.
Reconstitution	Please refer to the printed manual for detailed information.

Data



Recombinant Human Endocan/ESM-1 (C-6His)

Background

ESM-1, short from Endothelial cell-specific molecule 1, is expressed in lung, on the vascular capillary network within alveolar walls, and also at lower level in kidney. It is a secretory protein, and can be induced by TNF and IL1B/interleukin-1beta, but not IL4/interleukin-4. This protein plays great roles in angiogenesis, sprouting, and may have potent implications in lung endothelial cell-leukocyte interactions.

For Research Use Only