

## Recombinant Human C-X-C Motif Chemokine 6/CXCL6 (C-6His)

**Catalog No.** PKSH033901

*Note:* Centrifuge before opening to ensure complete recovery of vial contents.

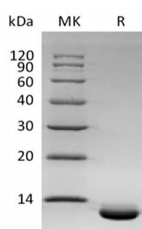
### Description

<b>Synonyms</b>	C-X-C Motif Chemokine 6; Chemokine Alpha 3; CKA-3; Granulocyte Chemotactic Protein 2; GCP-2; Small-Inducible Cytokine B6; CXCL6; GCP2; SCYB6
<b>Species</b>	Human
<b>Expression Host</b>	HEK293 Cells
<b>Sequence</b>	Gly38-Asn114
<b>Accession</b>	P80162
<b>Calculated Molecular Weight</b>	9.4 kDa
<b>Observed molecular weight</b>	13 kDa
<b>Tag</b>	C-His

### Properties

<b>Purity</b>	> 95 % as determined by reducing SDS-PAGE.
<b>Endotoxin</b>	< 1.0 EU per µg of the protein as determined by the LAL method.
<b>Storage</b>	Generally, lyophilized proteins are stable for up to 12 months when stored at -20 to -80°C. Reconstituted protein solution can be stored at 4-8°C for 2-7 days. Aliquots of reconstituted samples are stable at < -20°C for 3 months.
<b>Shipping</b>	This product is provided as lyophilized powder which is shipped with ice packs.
<b>Formulation</b>	Lyophilized from a 0.2 µm filtered solution of 20mM PB, 150mM NaCl, 5% Trehalose, 1mM EDTA, pH 7.4. Normally 5% - 8% trehalose, mannitol and 0.01% Tween 80 are added as protectants before lyophilization. Please refer to the specific buffer information in the printed manual.
<b>Reconstitution</b>	Please refer to the printed manual for detailed information.

### Data



> 95 % as determined by reducing SDS-PAGE.

### Background

Chemokine (C-X-C-Motif) Ligand 6 (CXCL6) is a small cytokine belonging to the CXC chemokine family. It is a potent

### For Research Use Only

neutrophil chemotactic and activating factor and it exhibits extensive similarity to other CXC chemokines such as IL-8 and ENA-78. CXCL6 can promote the release of MMP-9 from granulocytes indicating its potential role as an inflammatory mediator. It functionally uses both of the IL-8/CXCL8 receptors to chemoattract neutrophils but that is structurally most related to epithelial cell-derived neutrophil attractant-78 (ENA-78)/CXCL5. The human CXCL6 gene has been cloned and is physically mapped to the CXC chemokine locus on chromosome 4. Mature human CXCL6 is a 75 amino acid (aa) protein with a predicted molecular weight of approximately 8 kDa. Human CXCL6 shares 60% and 67% aa identity with mouse and bovine CXCL6, respectively.