

Recombinant Human FcRn & B2M Heterodimer (C-6His-Avi) Biotinylated

Catalog No. PKSH033906

Note: Centrifuge before opening to ensure complete recovery of vial contents.

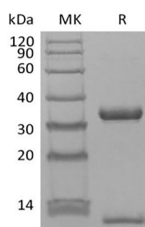
Description

Synonyms	IgG receptor FcRn; Neonatal Fc receptor; FCRN
Species	Human
Expression Host	HEK293 Cells
Sequence	Ala24-Ser297&Ile21-Met119
Accession	AAF72596&P61769
Calculated Molecular Weight	31.1&13.5 kDa
Observed molecular weight	35&13 kDa
Tag	C-His-Avi
Bioactivity	Loaded Biotinylated Human FcRn Heterodimer-His-Avi on HIS1K Biosensor, can bind Anti-Human HER2 mAb with an affinity constant of 0.11 μ M as determined in BLI assay.

Properties

Purity	> 95 % as determined by reducing SDS-PAGE.
Endotoxin	< 1.0 EU per μ g of the protein as determined by the LAL method.
Storage	Generally, lyophilized proteins are stable for up to 12 months when stored at -20 to -80°C. Reconstituted protein solution can be stored at 4-8°C for 2-7 days. Aliquots of reconstituted samples are stable at < -20°C for 3 months.
Shipping	This product is provided as lyophilized powder which is shipped with ice packs.
Formulation	Lyophilized from a 0.2 μ m filtered solution of 20mM PB, 6% Sucrose, 4% Mannitol, 0.05% Tween 80, pH 7.8. Normally 5% - 8% trehalose, mannitol and 0.01% Tween 80 are added as protectants before lyophilization. Please refer to the specific buffer information in the printed manual.
Reconstitution	Please refer to the printed manual for detailed information.

Data



> 95 % as determined by reducing SDS-PAGE.

For Research Use Only

Background

FcRn complex consist of two subunits: IgG receptor FcRn large subunit p51 (alpha chain) and Beta-2-microglobulin (Beta chain). The complexes is similar in structure to MHC class I-like heterodimer. Beta-2-microglobulin involved in the presentation of peptide antigens to the immune system. FcRn binds to the Fc region of monomeric immunoglobulins gamma, mediates the uptake of IgG from milk, Possible role in transfer of immunoglobulin G from mother to fetus. A principal component of antibody transport is the neonatal receptor for the Fc portion of immunoglobulin, a heterodimer of a MHC-1 alpha-chain homolog (FcRn) and beta-2-microglobulin (B2M).

For Research Use Only