

## Recombinant Human IL-2 Receptor Subunit Beta/IL-2RB/CD122 (C-6His-Avi) Biotinylated

Catalog No. PKSH033917

*Note:* Centrifuge before opening to ensure complete recovery of vial contents.

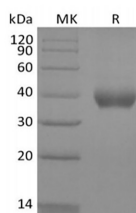
### Description

|                                    |  |
|------------------------------------|--|
| <b>Synonyms</b>                    | Interleukin-2 receptor subunit beta;IL2RB;IL-2 receptor subunit beta;IL-2R subunit beta;High affinity IL-2 receptor subunit beta;CD122 |
| <b>Species</b>                     | Human  |
| <b>Expression Host</b>             | HEK293 Cells   |
| <b>Sequence</b>                    | Ala27-Asp239   |
| <b>Accession</b>                   | P14784   |
| <b>Calculated Molecular Weight</b> | 27.4 kDa   |
| <b>Observed molecular weight</b>   | 35-45 kDa  |
| <b>Tag</b>                         | C-His-Avi  |

### Properties

|                       |   |
|-----------------------|---|
| <b>Purity</b>         | > 95 % as determined by reducing SDS-PAGE.  |
| <b>Endotoxin</b>      | < 1.0 EU per µg of the protein as determined by the LAL method.   |
| <b>Storage</b>        | Generally, lyophilized proteins are stable for up to 12 months when stored at -20 to -80°C. Reconstituted protein solution can be stored at 4-8°C for 2-7 days. Aliquots of reconstituted samples are stable at < -20°C for 3 months.       |
| <b>Shipping</b>       | This product is provided as lyophilized powder which is shipped with ice packs.   |
| <b>Formulation</b>    | Lyophilized from a 0.2 µm filtered solution of PBS, pH 7.4. Normally 5 % - 8 % trehalose, mannitol and 0.01% Tween80 are added as protectants before lyophilization. Please refer to the specific buffer information in the printed manual. |
| <b>Reconstitution</b> | Please refer to the printed manual for detailed information.  |

### Data



> 95 % as determined by reducing SDS-PAGE.

### Background

Human IL-2RB, also known as interleukin-2 receptor subunit beta, is the receptor for interleukin-2. IL2 receptor complex is involved in receptor mediated endocytosis and transduces the mitogenic signals of IL2. IL2 receptor complex has three

### For Research Use Only

forms with respect to ability to bind IL2. IL-2RB is belonged to a type I membrane protein, and has a 26 residue signal peptide, a 214 residue extracellular region, a 25 residue transmembrane region and a 286 residue cytoplasmic domain. IL-2RB is the subunit critical for receptor-mediated signaling via physically or functionally coupling to other signaling molecules, such as the Jak-STAT and Src-family protein tyrosine kinase although it lacks apparent catalytic motifs.

---

## For Research Use Only