

## Recombinant Human Sonic Hedgehog/SHH (C-6His)

Catalog No. PKSH033935

*Note:* Centrifuge before opening to ensure complete recovery of vial contents.

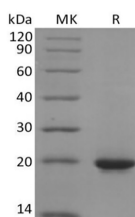
### Description

<b>Synonyms</b>	Sonic Hedgehog Protein;SHH;HHG-1
<b>Species</b>	Human
<b>Expression Host</b>	HEK293 Cells
<b>Sequence</b>	Cys24-Gly197
<b>Accession</b>	Q15465
<b>Calculated Molecular Weight</b>	20.4 kDa
<b>Observed molecular weight</b>	18-24 kDa
<b>Tag</b>	C-His

### Properties

<b>Purity</b>	> 95 % as determined by reducing SDS-PAGE.
<b>Endotoxin</b>	< 1.0 EU per µg of the protein as determined by the LAL method.
<b>Storage</b>	Generally, lyophilized proteins are stable for up to 12 months when stored at -20 to -80°C. Reconstituted protein solution can be stored at 4-8°C for 2-7 days. Aliquots of reconstituted samples are stable at < -20°C for 3 months.
<b>Shipping</b>	This product is provided as lyophilized powder which is shipped with ice packs.
<b>Formulation</b>	Lyophilized from a 0.2 µm filtered solution of PBS, pH 7.4. Normally 5 % - 8 % trehalose, mannitol and 0.01% Tween80 are added as protectants before lyophilization. Please refer to the specific buffer information in the printed manual.
<b>Reconstitution</b>	Please refer to the printed manual for detailed information.

### Data



> 95 % as determined by reducing SDS-PAGE.

### Background

Sonic Hedgehog Homolog (SHH) belongs to a three-protein family called hedgehog. The other two family members are Indian Hedgehog (IHH) and Desert Hedgehog (DHH). Hedgehog proteins are key signaling molecules in embryonic development. SHH is expressed in various embryonic tissues and plays critical roles in regulating the patterning of many

### For Research Use Only

systems, such as limbs and brain. SHH also plays an important role in adult, including the division of adult stem cells and the development of certain cancers and other diseases. Human SHH is expressed as a 45kDa precursor, and undergoes a series of processing during secretion. After the removal of the signal peptide, a protease within the C-terminal domain catalyzes the cleavage of SHH into a 20 kDa N-terminal signaling domain (SHH-N) and a 25 kDa C-terminal domain (SHH-C). SHH-N has the “all signaling” capability. SHH-N binds to the 12 pass transmembrane protein Patched (Ptc) on cell surface, which releases the repression of the activity of Smoothened (Smo), a G-protein coupled receptor, by Ptc.

---

## For Research Use Only

Toll-free: 1-888-852-8623

Web: [www.elabscience.com](http://www.elabscience.com)

Tel: 1-832-243-6086

Email: [techsupport@elabscience.com](mailto:techsupport@elabscience.com)

Fax: 1-832-243-6017