

## Recombinant Human Carbonic Anhydrase IX/CA9 (C-6His)

**Catalog No.** PKSH033940

*Note:* Centrifuge before opening to ensure complete recovery of vial contents.

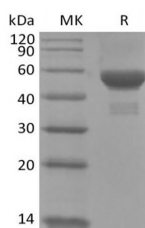
### Description

<b>Synonyms</b>	CA9;CA-IX;Carbonic Anhydrase IX;Carbonate dehydratase IX;G250;MN;P54/58N;RCC;RCC-associated protein G250
<b>Species</b>	Human
<b>Expression Host</b>	HEK293 Cells
<b>Sequence</b>	Gln38-Asp414
<b>Accession</b>	Q16790
<b>Calculated Molecular Weight</b>	42 kDa
<b>Observed molecular weight</b>	45-60 kDa
<b>Tag</b>	C-His

### Properties

<b>Purity</b>	> 95 % as determined by reducing SDS-PAGE.
<b>Endotoxin</b>	< 1.0 EU per µg of the protein as determined by the LAL method.
<b>Storage</b>	Generally, lyophilized proteins are stable for up to 12 months when stored at -20 to -80°C. Reconstituted protein solution can be stored at 4-8°C for 2-7 days. Aliquots of reconstituted samples are stable at < -20°C for 3 months.
<b>Shipping</b>	This product is provided as lyophilized powder which is shipped with ice packs.
<b>Formulation</b>	Lyophilized from a 0.2 µm filtered solution of PBS, pH 7.4. Normally 5 % - 8 % trehalose, mannitol and 0.01% Tween80 are added as protectants before lyophilization. Please refer to the specific buffer information in the printed manual.
<b>Reconstitution</b>	Please refer to the printed manual for detailed information.

### Data



> 95 % as determined by reducing SDS-PAGE.

### Background

Carbonic anhydrases IX (CA IX), also known as membrane antigen MN or CA9, is a member of the carbonic anhydrase (CA) family and may be involved in cell proliferation and cellular transformation. CAs are zinc metalloenzymes that

### For Research Use Only

catalyze the reversible hydration of carbon dioxide ( $H_2O + CO_2 = H^+ + HCO_3^-$ ) and thus participate in a variety of biological and physical processes. CA9 is a transmembrane enzyme expressed primarily in carcinoma cells. It is one of the best markers for hypoxia and for RCC. Appears to be a novel specific biomarker for a cervical neoplasia.