

## Recombinant Human CD47/IAP/OA3 (C-Avi-6His) Biotinylated

**Catalog No.** PKSH033962

*Note:* Centrifuge before opening to ensure complete recovery of vial contents.

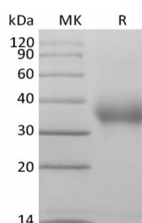
### Description

<b>Synonyms</b>	Leukocyte Surface Antigen CD47;Antigenic Surface Determinant Protein OA3;Integrin-Associated Protein;IAP;Protein MER6;CD47;MER6
<b>Species</b>	Human
<b>Expression Host</b>	HEK293 Cells
<b>Sequence</b>	Gln19-Pro139
<b>Accession</b>	Q08722
<b>Calculated Molecular Weight</b>	16.4 kDa
<b>Observed molecular weight</b>	30-40 kDa
<b>Tag</b>	C-Avi-His

### Properties

<b>Purity</b>	> 95 % as determined by reducing SDS-PAGE.
<b>Endotoxin</b>	< 1.0 EU per µg of the protein as determined by the LAL method.
<b>Storage</b>	Generally, lyophilized proteins are stable for up to 12 months when stored at -20 to -80°C. Reconstituted protein solution can be stored at 4-8°C for 2-7 days. Aliquots of reconstituted samples are stable at < -20°C for 3 months.
<b>Shipping</b>	This product is provided as lyophilized powder which is shipped with ice packs.
<b>Formulation</b>	Lyophilized from a 0.2 µm filtered solution of 10mMTris-Citrate, 150mM NaCl, pH 8.0. Normally 5% - 8% trehalose, mannitol and 0.01% Tween 80 are added as protectants before lyophilization. Please refer to the specific buffer information in the printed manual.
<b>Reconstitution</b>	Please refer to the printed manual for detailed information.

### Data



> 95 % as determined by reducing SDS-PAGE.

### Background

CD47(Integrin-Associated Protein,IAP) is a 40 ? 60 kDa variably glycosylated atypical member of the immunoglobulin

### For Research Use Only

superfamily. The ubiquitously expressed CD47 binds to SIRP family members on macrophages, neutrophils, and T cells. CD47 is involved in the increase in intracellular calcium concentration that occurs upon cell adhesion to extracellular matrix. The protein is also a receptor for the C-terminal cell-binding domain of thrombospondin, and it may play a role in membrane transport and signal transduction. This protein has broad tissue distribution, and is reduced in expression on Rh erythrocytes.