

Recombinant Human LRRC32/GARP (C-Fc)

Catalog No. PKSH033979

Note: Centrifuge before opening to ensure complete recovery of vial contents.

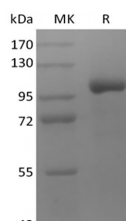
Description

Synonyms	GARP;GARPGarpin;Garpin;D11S833E
Species	Human
Expression Host	HEK293 Cells
Sequence	His20-Asn627
Accession	Q14392
Calculated Molecular Weight	92.9 kDa
Observed molecular weight	110 kDa
Tag	C-Fc

Properties

Purity	> 95 % as determined by reducing SDS-PAGE.
Endotoxin	< 1.0 EU per µg of the protein as determined by the LAL method.
Storage	Generally, lyophilized proteins are stable for up to 12 months when stored at -20 to -80°C. Reconstituted protein solution can be stored at 4-8°C for 2-7 days. Aliquots of reconstituted samples are stable at < -20°C for 3 months.
Shipping	This product is provided as lyophilized powder which is shipped with ice packs.
Formulation	Lyophilized from a 0.2 µm filtered solution of PBS, pH 7.4. Normally 5 % - 8 % trehalose, mannitol and 0.01% Tween80 are added as protectants before lyophilization. Please refer to the specific buffer information in the printed manual.
Reconstitution	Please refer to the printed manual for detailed information.

Data



> 95 % as determined by reducing SDS-PAGE.

Background

Leucine Rich Repeat Containing 32 (LRRC32), also known as Glycoprotein A Repetitions Predominant (GARP), has been postulated as a novel surface marker of activated T(regs). LRRC32 binds directly to the TGF-beta latency associated peptide (LAP) and tethers latent TGF-beta on the surface of activated Treg cells. The presentation of TGF-beta on Tregs

For Research Use Only

contributes to their ability to suppress na?ve T cell proliferation. LRRC32 is widely expressed during embryogenesis and on adult platelets. Human LRRC32 is identified as a lineage specific key receptor for human T cells.

For Research Use Only

Toll-free: 1-888-852-8623

Web: www.elabscience.com

Tel: 1-832-243-6086

Email: techsupport@elabscience.com

Fax: 1-832-243-6017