

Recombinant Human Receptor Tyrosine-Protein Kinase ErbB-3/HER3 (C-6His-Avi) Biotinylated

Catalog No. PKSH033987

Note: Centrifuge before opening to ensure complete recovery of vial contents.

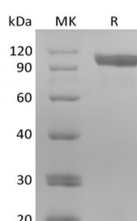
Description

| | |
|------------------------------------|---|
| Synonyms | Proto-oncogene-like protein c-ErbB-3;Tyrosine kinase-type cell surface receptor HER3;ERBB3;HER3 |
| Species | Human |
| Expression Host | HEK293 Cells |
| Sequence | Ser20-Thr643 |
| Accession | P21860 |
| Calculated Molecular Weight | 71.3 kDa |
| Observed molecular weight | 90-120 kDa |
| Tag | C-His-Avi |

Properties

| | |
|-----------------------|---|
| Purity | > 95 % as determined by reducing SDS-PAGE. |
| Endotoxin | < 1.0 EU per µg of the protein as determined by the LAL method. |
| Storage | Generally, lyophilized proteins are stable for up to 12 months when stored at -20 to -80°C. Reconstituted protein solution can be stored at 4-8°C for 2-7 days. Aliquots of reconstituted samples are stable at < -20°C for 3 months. |
| Shipping | This product is provided as lyophilized powder which is shipped with ice packs. |
| Formulation | Lyophilized from a 0.2 µm filtered solution of PBS, pH 7.4. Normally 5 % - 8 % trehalose, mannitol and 0.01% Tween80 are added as protectants before lyophilization. Please refer to the specific buffer information in the printed manual. |
| Reconstitution | Please refer to the printed manual for detailed information. |

Data



> 95 % as determined by reducing SDS-PAGE.

Background

Receptor tyrosine-protein kinase erbB-3 is an enzyme that in humans is encoded by the ERBB3 gene. This gene encodes a

For Research Use Only

member of the epidermal growth factor receptor (EGFR) family of receptor tyrosine kinases. ERBB3 belongs to the protein kinase superfamily, tyrosine protein kinase family and EGF receptor subfamily. It contains 1 protein kinase domain and it is expressed in Epithelial tissues and brain. This membrane-bound protein has a neuregulin binding domain but not an active kinase domain. It therefore can bind this ligand but not convey the signal into the cell through protein phosphorylation. However, it does form heterodimers with other EGF receptor family members which do have kinase activity.

For Research Use Only