

Recombinant Human Butyrophilin Subfamily 3 Member A1/BTN3A1 (C-Fc-Avi) Biotinylated

Catalog No. PKSH034003

Note: Centrifuge before opening to ensure complete recovery of vial contents.

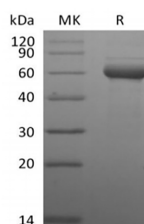
Description

Synonyms	Butyrophilin subfamily 3 member A1;CD277;BTN3A1;BTF5
Species	Human
Expression Host	HEK293 Cells
Sequence	Gln30-Gly254
Accession	O00481
Calculated Molecular Weight	52.6 kDa
Observed molecular weight	58-62 kDa
Tag	C-Fc-Avi

Properties

Purity	> 90 % as determined by reducing SDS-PAGE.
Endotoxin	< 1.0 EU per µg of the protein as determined by the LAL method.
Storage	Generally, lyophilized proteins are stable for up to 12 months when stored at -20 to -80°C. Reconstituted protein solution can be stored at 4-8°C for 2-7 days. Aliquots of reconstituted samples are stable at < -20°C for 3 months.
Shipping	This product is provided as lyophilized powder which is shipped with ice packs.
Formulation	Lyophilized from a 0.2 µm filtered solution of PBS, pH 7.4. Normally 5 % - 8 % trehalose, mannitol and 0.01% Tween80 are added as protectants before lyophilization. Please refer to the specific buffer information in the printed manual.
Reconstitution	Please refer to the printed manual for detailed information.

Data



> 90 % as determined by reducing SDS-PAGE.

Background

Butyrophilin Subfamily 3 Member A1 (BTN3A1/CD277) is a type I transmembrane glycoprotein member of the Ig superfamily. It is expressed on a wide variety of immune cells. Similar to BTN3A2 and BTN3A3, BTN3A1 is composed

For Research Use Only

of an extracellular N-terminal IgV and a membraneproximal IgC domain followed by a transmembrane domain and a cytoplasmic tail. These Ig domains are also found in B7 family costimulatory molecules, suggesting structural and functional similarities between the two protein families. BTN3A1 acts as a critical protein for the activation of V γ 9V δ 2 T cells following detection of distressed cells. The anti-tumor responses of V γ 9V δ 2 T cells may be enhanced with agonistic anti-BTNA3 antibodies.