

Recombinant Human HLA-A*0201 NY-ESO-1 complex Protein (C-10His)

Catalog No. PKSH034036

Note: Centrifuge before opening to ensure complete recovery of vial contents.

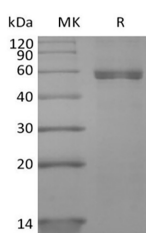
Description

Synonyms	MHC;MY-ESO-1;HLA-A*0201 NY-ESO-1 complex Protein
Species	Human
Expression Host	HEK293 Cells
Sequence	SLLMWITQC&Ile21-Met119&Gly25-Ile308(Ala269Val)
Accession	P61769&P01892
Calculated Molecular Weight	49.1 kDa
Observed molecular weight	55-60 kDa
Tag	C-His

Properties

Purity	> 90 % as determined by reducing SDS-PAGE.
Endotoxin	< 1.0 EU per µg of the protein as determined by the LAL method.
Storage	Generally, lyophilized proteins are stable for up to 12 months when stored at -20 to -80°C. Reconstituted protein solution can be stored at 4-8°C for 2-7 days. Aliquots of reconstituted samples are stable at < -20°C for 3 months.
Shipping	This product is provided as lyophilized powder which is shipped with ice packs.
Formulation	Lyophilized from a 0.2 µm filtered solution of 20mM PB, 500mM NaCl, pH7.4. Normally 5% - 8% trehalose, mannitol and 0.01% Tween 80 are added as protectants before lyophilization. Please refer to the specific buffer information in the printed manual.
Reconstitution	Please refer to the printed manual for detailed information.

Data



> 90 % as determined by reducing SDS-PAGE.

Background

NY-ESO-1 is a well-known cancer-testis antigen (CTAs) with re-expression in numerous cancer types. Its ability to elicit spontaneous humoral and cellular immune responses, together with its restricted expression pattern, have rendered it a good candidate target for cancer immunotherapy. Optimally assembled peptide-HLA-B2M trimer translocates to the

For Research Use Only

surface of antigen-presenting cells, where it interacts with TCR and CD8 coreceptor on the surface of T cells.