

## Recombinant Mouse Alpha-1-antitrypsin 1-1/Serpin A1e (C-6His)

Catalog No. PKSM041392

**Note:** Centrifuge before opening to ensure complete recovery of vial contents.

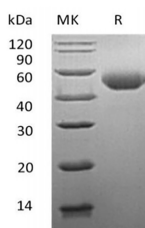
### Description

<b>Synonyms</b>	Alpha-1-antitrypsin 1-5;Alpha-1 protease inhibitor 5;Serine protease inhibitor 1-5;Serine protease inhibitor A1e;Serpina 1e;Serpina 1e;Dom5;Spi1-5
<b>Species</b>	Mouse
<b>Expression Host</b>	HEK293 Cells
<b>Sequence</b>	Glu25-Lys413
<b>Accession</b>	Q00898
<b>Calculated Molecular Weight</b>	44.5 kDa
<b>Observed molecular weight</b>	47-68 kDa
<b>Tag</b>	C-His

### Properties

<b>Purity</b>	> 95 % as determined by reducing SDS-PAGE.
<b>Endotoxin</b>	< 1.0 EU per µg of the protein as determined by the LAL method.
<b>Storage</b>	Store at < -20°C, stable for 6 months. Please minimize freeze-thaw cycles.
<b>Shipping</b>	This product is provided as liquid. It is shipped at frozen temperature with blue ice/gel packs. Upon receipt, store it immediately at < - 20°C.
<b>Formulation</b>	Supplied as a 0.2 µm filtered solution of 20mM Tris-HCl, 150mM NaCl, pH 8.0.
<b>Reconstitution</b>	Not Applicable

### Data



> 95 % as determined by reducing SDS-PAGE.

### Background

Alpha-1-antitrypsin 1-5(SERPIN A1) is a secreted protein and belongs to the serpin family. Serpins bind the protease active site resulting in a major conformational rearrangement that traps the enzyme in a covalent acyl-enzyme intermediate. Mouse SERPIN A1 is a serine protease inhibitor whose targets include elastase, plasmin, thrombin, trypsin, chymotrypsin, and plasminogen activator. Defects in this gene can cause emphysema or liver disease. Several transcript variants encoding the same protein have been found for this gene.

### For Research Use Only