

Recombinant Mouse IL-2 Receptor Subunit Beta/IL-2RB/CD122 (C-6His)

Catalog No. PKSM041436

Note: Centrifuge before opening to ensure complete recovery of vial contents.

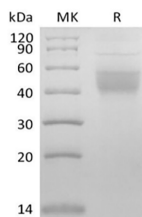
Description

Synonyms	Interleukin-2 receptor subunit beta;IL2RB;IL-2 receptor subunit beta;IL-2R subunit beta;High affinity IL-2 receptor subunit beta;CD122
Species	Mouse
Expression Host	HEK293 Cells
Sequence	Ala27-Glu240
Accession	P16297
Calculated Molecular Weight	26.1 kDa
Observed molecular weight	40-60 kDa
Tag	C-His

Properties

Purity	> 90 % as determined by reducing SDS-PAGE.
Endotoxin	< 1.0 EU per µg of the protein as determined by the LAL method.
Storage	Generally, lyophilized proteins are stable for up to 12 months when stored at -20 to -80°C. Reconstituted protein solution can be stored at 4-8°C for 2-7 days. Aliquots of reconstituted samples are stable at < -20°C for 3 months.
Shipping	This product is provided as lyophilized powder which is shipped with ice packs.
Formulation	Lyophilized from a 0.2 µm filtered solution of PBS, pH 7.4. Normally 5 % - 8 % trehalose, mannitol and 0.01% Tween80 are added as protectants before lyophilization. Please refer to the specific buffer information in the printed manual.
Reconstitution	Please refer to the printed manual for detailed information.

Data



> 90 % as determined by reducing SDS-PAGE.

Background

IL-2RB, also known as interleukin-2 receptor subunit beta, is the receptor for interleukin-2. IL2 receptor complex is involved in receptor mediated endocytosis and transduces the mitogenic signals of IL2. IL2 receptor complex has three

For Research Use Only

forms with respect to ability to bind IL2. IL-2RB is belonged to a type I membrane protein, and has a 26 residue signal peptide, a 214 residue extracellular region, a 25 residue transmembrane region and a 286 residue cytoplasmic domain. IL-2RB is the subunit critical for receptor-mediated signaling via physically or functionally coupling to other signaling molecules, such as the Jak-STAT and Src-family protein tyrosine kinase although it lacks apparent catalytic motifs.

For Research Use Only