

## Recombinant Rhesus Macaque Tumor-associated Calcium Signal Transducer 2/TROP-2 (C-6His)

Catalog No. PKSQ050121

*Note:* Centrifuge before opening to ensure complete recovery of vial contents.

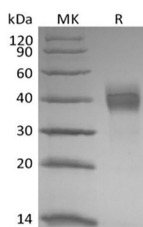
### Description

<b>Synonyms</b>	Tumor-associated calcium signal transducer 2;Membrane component chromosome 1 surfacemarker 1;Cell surface glycoprotein Trop-2;TACSTD2;TROP2
<b>Species</b>	Rhesus Macaque
<b>Expression Host</b>	HEK293 Cells
<b>Sequence</b>	His27-Arg272
<b>Accession</b>	XP_001114599.1
<b>Calculated Molecular Weight</b>	28.7 kDa
<b>Observed molecular weight</b>	38-45 kDa
<b>Tag</b>	C-His
<b>Bioactivity</b>	Loaded Anti-Human TROP-2 mAb-Fc on Protein A Biosensor, can bind Rhesus Macaque TROP-2-His with an affinity constant of 0.29 nM as determined in BLI assay.

### Properties

<b>Purity</b>	> 95 % as determined by reducing SDS-PAGE.
<b>Endotoxin</b>	< 1.0 EU per µg of the protein as determined by the LAL method.
<b>Storage</b>	Generally, lyophilized proteins are stable for up to 12 months when stored at -20 to -80°C. Reconstituted protein solution can be stored at 4-8°C for 2-7 days. Aliquots of reconstituted samples are stable at < -20°C for 3 months.
<b>Shipping</b>	This product is provided as lyophilized powder which is shipped with ice packs.
<b>Formulation</b>	Lyophilized from a 0.2 µm filtered solution of PBS, pH 7.4. Normally 5 % - 8 % trehalose, mannitol and 0.01% Tween80 are added as protectants before lyophilization. Please refer to the specific buffer information in the printed manual.
<b>Reconstitution</b>	Please refer to the printed manual for detailed information.

### Data



> 95 % as determined by reducing SDS-PAGE.

### For Research Use Only

## Background

Tumor associated calcium signal transducer 2 (TACSTD2, TROP-2) is a type I cell surface glycoprotein that is highly expressed on human carcinomas. It was originally identified as an antigen present on human gastrointestinal tumors and is the second of two members of this family. Human and mouse TROP-2 share 87% amino acid (aa) similarity. TROP-2 is capable of transducing an intracellular calcium signal and may play a role in tumor growth. It also has adhesive functions.

---

## For Research Use Only