

Recombinant Protein A/G/L-Cys Protein (His Tag)

Catalog No. PKSQ500001

Note: Centrifuge before opening to ensure complete recovery of vial contents.

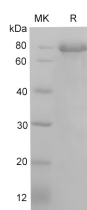
Description

Synonyms	Protein AGL
Expression Host	E.coli
Sequence	MHHHHHHHNAAQHDEAQQNAFYQVLNMPNLNADQRNGFIQSLKDDPSQS ANVLGEAQKLNDSQAPKADAQQNNFNKDQQSAFYEILNMPNLNEAQRNG FIQSLKDDPSQSTNVLGEAKKLNESQAPKADNFNKEQQNAFYEILNMPNL NEEQRNGFIQSLKDDPSQSANLLSEAKKLNESQAPKADNKFNKEQQNAFYE ILHLPNLNEEQRNGFIQSLKDDPSQSANLLAEAKKLNDAQAPKADNKFNKE QQNAFYEILHLPNLTEEQRNGFIQSLKDDPSVSKEILAEAKKLNDAQAPKEE DSLEGS GSGTYKLILNGKTLKGETTTEAVDAATAEKVFKQYANDNGVDGE WTYDDATKTFTVTEKPEVIDASELTPAVTTYKLVINGKTLKGETTTKAVDA ETAEKAFKQYANDNGVDGVWTYDDATKTFTVTEEPRARPGSGSGKEETPE TPETDSEEEVTIKANLIFANGSTQTAEFKGTFEKATSEAYAYADTLKKNNGE YTVDVADKGYTLNKFAGKEKTPEEPKKEVTIKANLIYADGKTQTAEFKGT FEEATAEAYRYADALKKNNGEYTVDVADKGYTLNKFAGKEKTPEEPKKE VTIKANLIYADGKTQTAEFKGT FEEATAEAYRYADLLAKENGKYTVDVAD KGYTLNKFAGKEKTPEEPKKEVTIKANLIYADGKTQTAEFKGTFAEATAEA YRYADLLAKENGKYTADLEDGGYTINIRFAGKKVDEKPEEKEQVTIKENIY FEDGTVQTATFKGTFAEATAEAYRYADLLSKEHGKYTADLEDGGYTINIRF AGC
Accession	P99134/ P06654/Q53291
Calculated Molecular Weight	90.4 kDa
Observed molecular weight	85-95 kDa
Tag	N-His

Properties

Purity	> 80 % as determined by reducing SDS-PAGE.
Storage	Generally, lyophilized proteins are stable for up to 12 months when stored at -20 to -80°C. Reconstituted protein solution can be stored at 4-8°C for 2-7 days. Aliquots of reconstituted samples are stable at < -20°C for 3 months.
Shipping	This product is provided as lyophilized powder which is shipped with ice packs.
Formulation	Lyophilized from sterile PBS, pH 7.4
Reconstitution	Please refer to the printed manual for detailed information.

Data



For Research Use Only

Recombinant Protein A/G/L-Cys Protein (His Tag)

Background

Protein A/G/L is a genetically engineered protein that combines the IgG binding profiles of all Protein A, Protein G and Protein L. It is a gene fusion product. Recombinant fusion protein A/G/L contains five Ig-binding regions of protein L, five IgG binding domains from Protein A, and two Ig-binding region of protein G. Cell wall binding regions, albumin binding regions and other non-specific binding regions have all been removed from the fusion protein to ensure the maximum specific IgG binding. Protein A/G/L binds to human, mouse IgG, but binds to rat IgG weakly.

For Research Use Only