

Recombinant Protein A/G-Cys Protein (His Tag)

Catalog Number:PKSQ500002



Note: Centrifuge before opening to ensure complete recovery of vial contents.

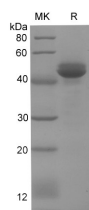
Description

Synonyms	Protein AG
Expression Host	E.coli
Sequence	MHHHHHHHNAAQHDEAQQNAFYQVLNMPNLNADQRNGFIQSLKDDPSQS ANVLGEAQKLNDSQAPKADAQQNNFNKDQQSAFYEILNMPNLNEAQRNG FIQSLKDDPSQSTNVLGEAKKLNESQAPKADNNFNKEQQNAFYEILNMPNL NEEQRNGFIQSLKDDPSQSANLLSEAKKLNESQAPKADNKFNKEQQNAFYE ILHLPNLNEEQRNGFIQSLKDDPSQSANLLAEAKKLNDAQAPKADNKFNKE QQNAFYEILHLPNLTEEQRNGFIQSLKDDPSVSKEILAEAKKLNDAQAPKEE DSLESGSGTYKLILNGKTLKGETTTEAVDAATAEKVFKQYANDNGVDGE WTYDDATKTFTVTEKPEVIDASELTPAVTTYKLVINGKTLKGETTTKAVDA ETAEKAFKQYANDNGVDGVWTYDDATKTFTVTEC
Accession	P99134/ P06654
Calculated Molecular Weight	48.9 kDa
Observed molecular weight	48-50 kDa
Tag	N-His

Properties

Purity	> 90 % as determined by reducing SDS-PAGE.
Endotoxin	Please contact us for more information.
Storage	Generally, lyophilized proteins are stable for up to 12 months when stored at -20 to -80°C. Reconstituted protein solution can be stored at 4-8°C for 2-7 days. Aliquots of reconstituted samples are stable at < -20°C for 3 months.
Shipping	This product is provided as lyophilized powder which is shipped with ice packs.
Formulation	Lyophilized from sterile potassium phosphate, pH 7.4
Reconstitution	Please refer to the printed manual for detailed information.

Data



Recombinant Protein A/G-Cys Protein (His Tag)

Background

Protein A/G is a genetically engineered protein containing 5 IgG-binding regions of protein A and 2 of protein G. Cell wall binding region, cell membrane binding region and albumin binding region have been removed from the recombinant Protein A/G to ensure the maximum specific IgG binding. The recombinant Protein A/G is ideal for purification of polyclonal or monoclonal IgG antibodies.

For Research Use Only

A Reliable Research Partner in Life Science and Medicine

Toll-free: 1-888-852-8623

Web: www.elabscience.com

Tel: 1-832-243-6086

Email: techsupport@elabscience.com

Fax: 1-832-243-6017