

Recombinant Bcl2 Monoclonal Antibody

Catalog Number:E-AB-81425



Note: Centrifuge before opening to ensure complete recovery of vial contents.

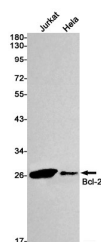
Description

Reactivity	Human
Immunogen	A synthetic peptide of human Bcl-2
Host	Rabbit
Isotype	IgG
Clone	R03-9E1
Purification	Affinity Purified
Conjugation	Unconjugated
Formulation	50mM Tris-Glycine(pH 7.4), 0.15M NaCl, 40% Glycerol, 0.01% Sodium azide and 0.05% protective protein

Applications Recommended Dilution

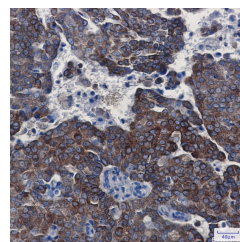
WB	1:500-1:1000
IHC	1:20-1:200

Data



Western blot detection of Bcl-2 in Jurkat, HeLa cell lysates using Bcl-2 Rabbit mAb(1:1000 diluted). Predicted band size: 26kDa. Observed band size: 26kDa.

Observed Mw: 26kDa
Calculated Mw: 26kDa



Immunohistochemistry of Bcl-2 in paraffin-embedded human breast cancer tissue using Bcl-2 Rabbit mAb at dilution 1:100

Preparation & Storage

Storage Store at -20°C. Avoid freeze / thaw cycles.

Background

BCL2 belongs to the Bcl-2 family. It suppresses apoptosis in a variety of cell systems including factor-dependent lymphohematopoietic and neural cells. BCL2 regulates cell death by controlling the mitochondrial membrane permeability. It appears to function in a feedback loop system with caspases. BCL2 inhibits caspase activity either by preventing the release of cytochrome c from the mitochondria and/or by binding to the apoptosis-activating factor (APAF-1).

For Research Use Only

A Reliable Research Partner in Life Science and Medicine

Toll-free: 1-888-852-8623

Web: www.elabscience.com

Tel: 1-832-243-6086

Email: techsupport@elabscience.com

Fax: 1-832-243-6017