

Recombinant Smad3 Monoclonal Antibody

Catalog Number:E-AB-81437



Note: Centrifuge before opening to ensure complete recovery of vial contents.

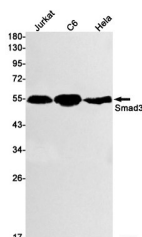
Description

Reactivity	Human,Rat
Immunogen	A synthetic peptide of human Smad3
Host	Rabbit
Isotype	IgG
Clone	R09-7H4
Purification	Affinity Purified
Conjugation	Unconjugated
Formulation	50mM Tris-Glycine(pH 7.4), 0.15M NaCl, 40% Glycerol, 0.01% Sodium azide and 0.05% protective protein

Applications Recommended Dilution

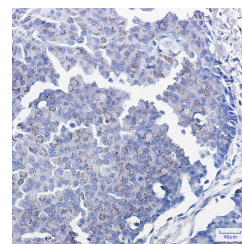
WB	1:1000-1:2000
IHC	1:20-1:500

Data



Western blot detection of Smad3 in Jurkat,C6,HeLa cell lysates using Smad3 Rabbit mAb(1:1000 diluted).Predicted band size:48kDa.Observed band size:52kDa.

Observed Mw:52kDa
Calculated Mw:48kDa



Immunohistochemistry of Smad3 in paraffin-embedded Human breast cancer tissue using Smad3 Rabbit mAb at dilution 1:100

Preparation & Storage

Storage Store at -20°C. Avoid freeze / thaw cycles.

Background

The protein encoded by this gene belongs to the SMAD, a family of proteins similar to the gene products of the Drosophila gene 'mothers against decapentaplegic' (Mad) and the C. elegans gene Sma. SMAD proteins are signal transducers and transcriptional modulators that mediate multiple signaling pathways. This protein functions as a transcriptional modulator activated by transforming growth factor-beta and is thought to play a role in the regulation of carcinogenesis.

For Research Use Only

A Reliable Research Partner in Life Science and Medicine

Toll-free: 1-888-852-8623

Web: www.elabscience.com

Tel: 1-832-243-6086

Email: techsupport@elabscience.com

Fax: 1-832-243-6017